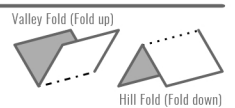
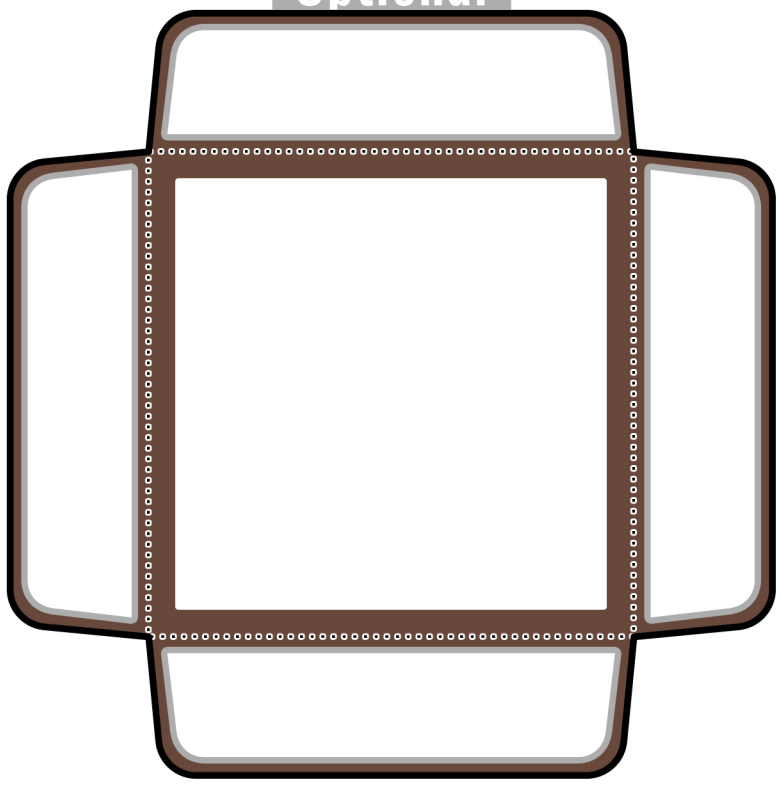


**Recommended**  
 Print onto 250gsm or heavier cardstock for best results.  
 Score fold lines first using a craft knife or empty ball point pen.  
 Check for instructions before building.

- 1) Cut
- 2) Hill Fold
- 3) Valley Fold
- 4) Glue



Part  
Optional



**Recommended**  
Print onto 250gsm or heavier cardstock for best results.  
Score fold lines first using a craft knife or empty ball point pen.  
Check for instructions before building.

- 1) Cut
- 2) Hill Fold
- 3) Valley Fold
- 4) Glue

