



twinkl.co.uk

Thanks for not printing this page!

Simply print from page 2 in your printing options to avoid wasted paper & ink!



...your first choice for easy to use, trusted and high quality teaching materials for educators and parents worldwide - professionally crafted materials with a personal touch.

A brief word about copyright...

By downloading this resource, you agree to the following:



You may use this resource for personal and/or classroom use only.

In order to support us, we ask that you always acknowledge www.twinkl.co.uk as the source of the resource. **If you love these resources, why not let others know about Twinkl?**



You must not reproduce or share this resource with others in any form. They are more than welcome to download the resource directly from us.

You must not host or in any other way share our resources directly with others, without our prior written permission.

We also ask that this product is not used for commercial purposes and also that you do not alter the digital versions of our products in any way.

Thank you for downloading!

We hope you enjoy the resource and we'll see you very soon!



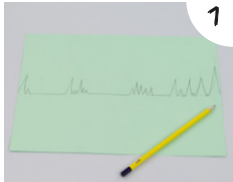
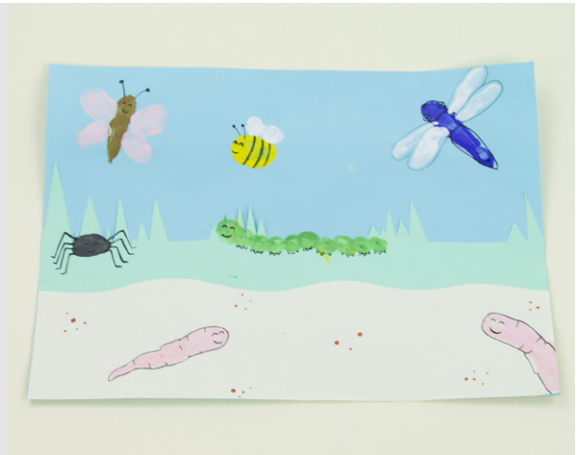
Did you know we also have twinkl Premium for schools?

Email sales@twinkl.co.uk for more information.

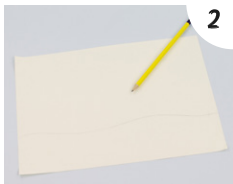
Fingerprint Minibeast Garden

Supplies

- A4 sized blue, green and cream/light brown card
- Glue stick
- Scissors
- Selection of paints
- Felt tip pens



1 Take the green card and place it landscape, then draw a zig zag line going along its width, about half of the way up.



2 Repeat step 1 with the cream/light brown card, this time drawing a wavy line a third of the way up.



3 Cut along the zig zag line. Keep the bottom piece as this will be the grass for the garden. Then repeat with the wavy line, keeping the bottom piece as this will be the soil for the bottom.



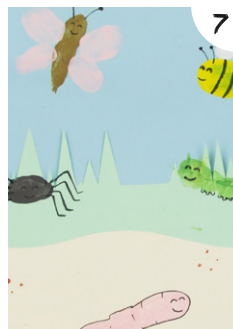
4 Have the blue card landscape and use glue to stick the cut out piece of green card along the bottom. Then stick the cream/brown card on top of this. This should leave you with three different coloured layers.



5 Now add minibeasts to the garden! For example, use pink paint on a little finger to print a worm. Leave to dry so that it doesn't get smudged as you add more minibeasts.



6 Continue to build up minibeasts in the garden using finger prints. Examples include making a spider body using a thumb print, or a caterpillar using finger prints joined up in a line. Leave to dry.



7 Once dry, add details to the minibeasts, such as eyes, and legs, using with felt pens.



Craft Instructions

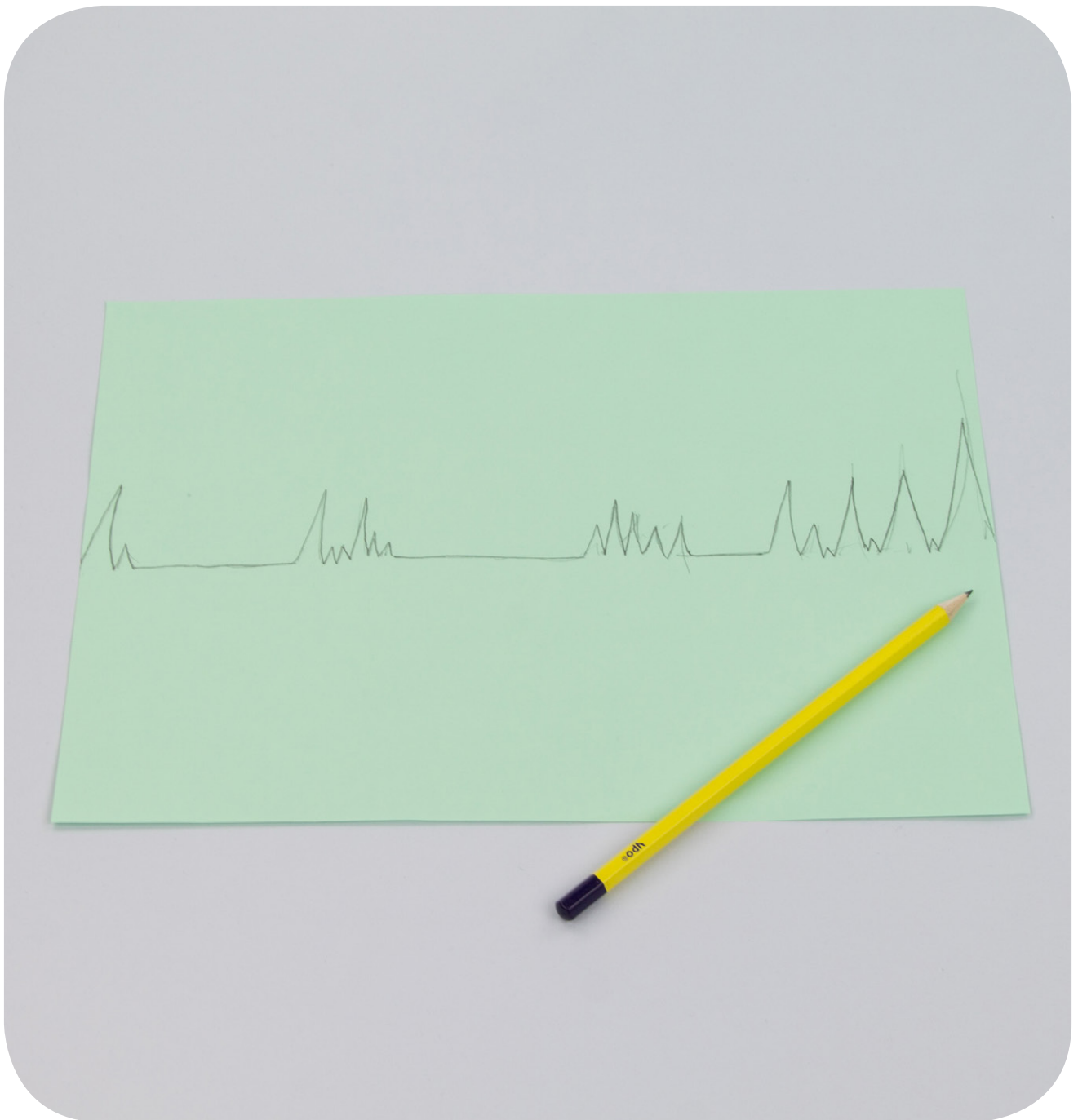
Fingerprint Minibeast Garden



Supplies

- A4 sized blue, green and cream/light brown card
- Glue stick
- Scissors
- Selection of paints
- Felt tip pens

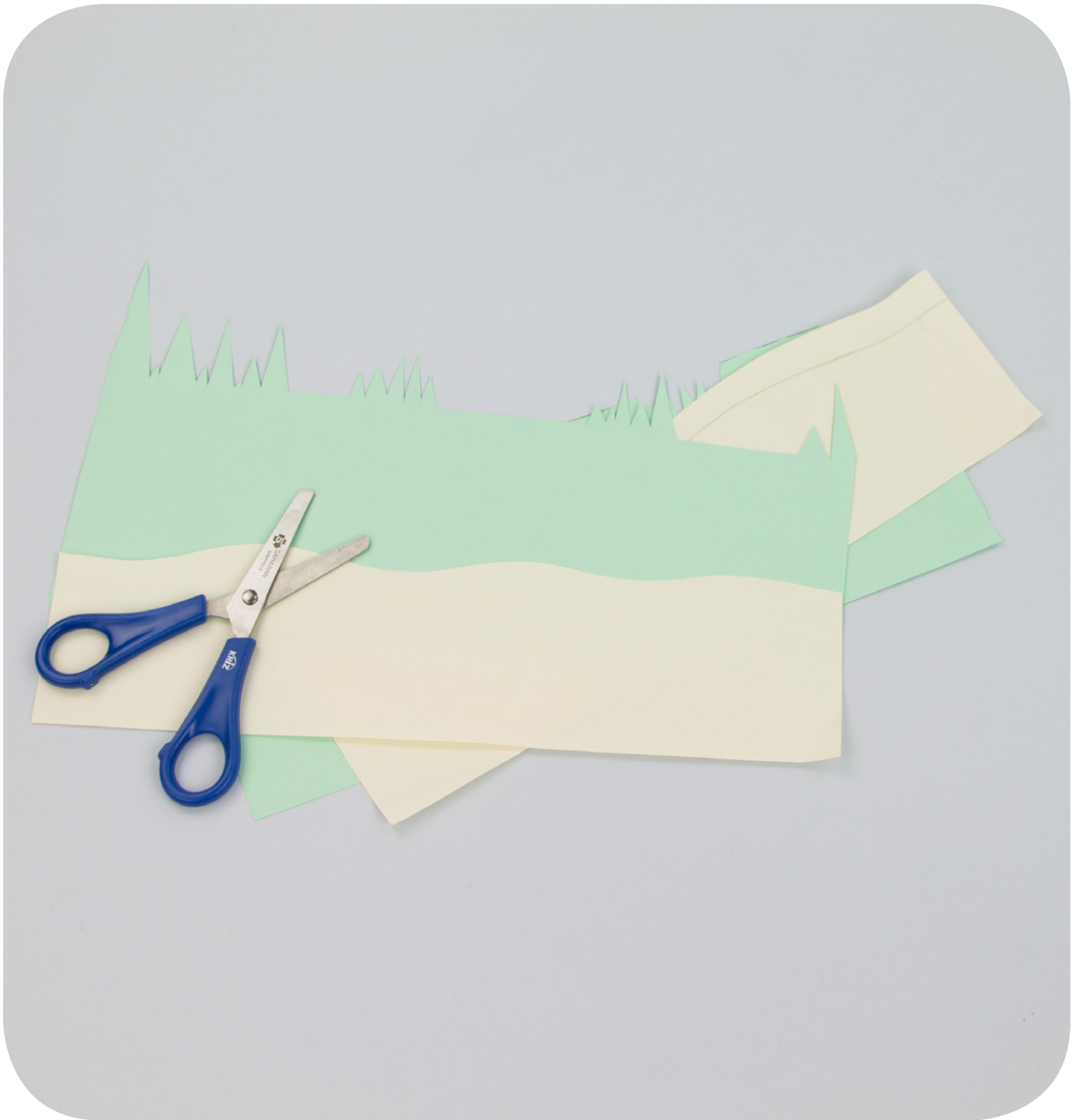




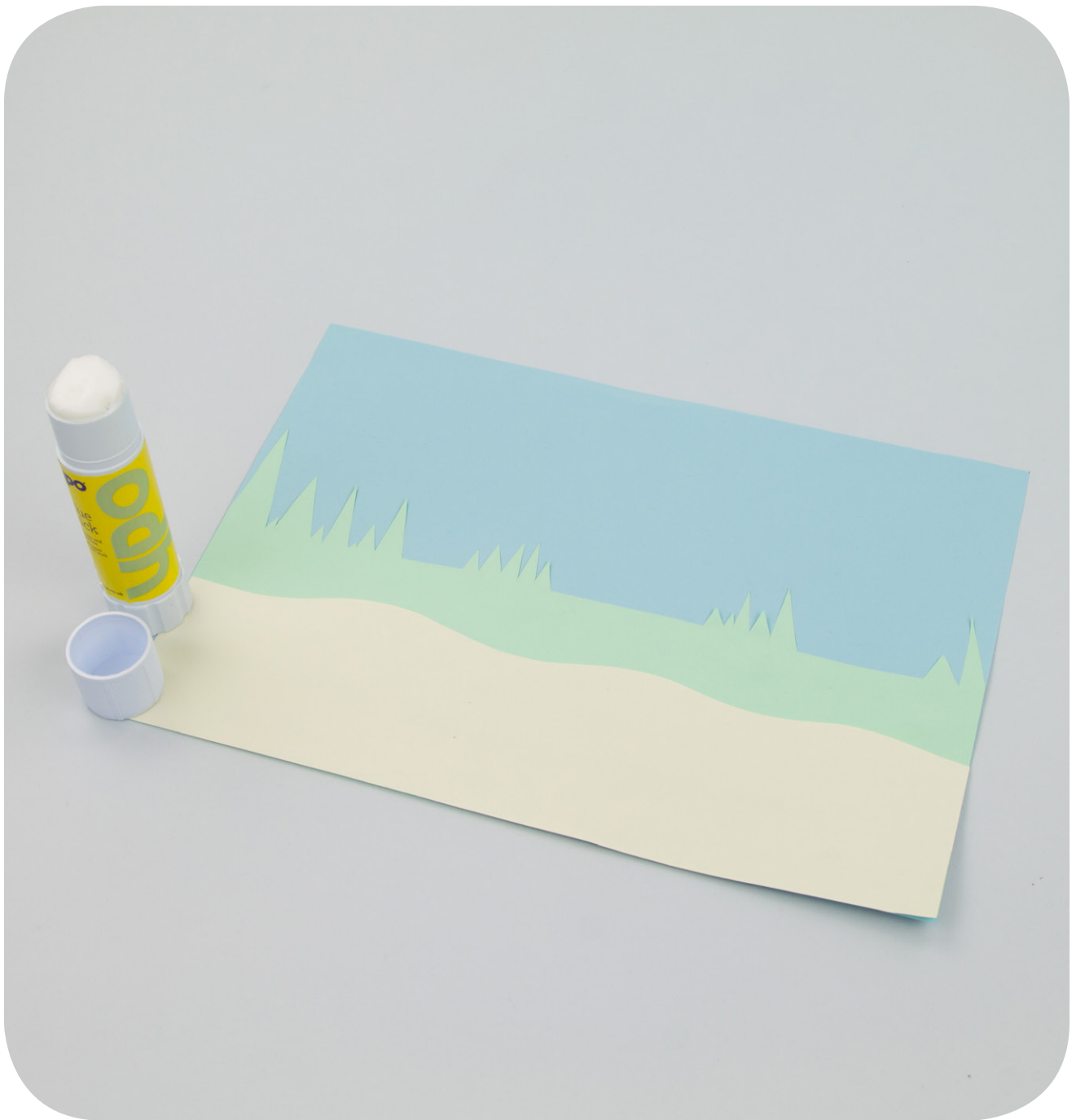
Step 1. Take the green card and place it landscape, then draw a zig zag line going along its width, about half of the way up.



Step 2. Repeat step 1 with the cream/light brown card, this time drawing a wavy line a third of the way up.



Step 3. Cut along the zig zag line. Keep the bottom piece as this will be the grass for the garden. Then repeat with the wavy line, keeping the bottom piece as this will be the soil for the bottom.



Step 4. Have the blue card landscape and use glue to stick the cut out piece of green card along the bottom. Then stick the cream/brown card on top of this. This should leave you with three different coloured layers.



Step 5. Now add minibeasts to the garden! For example, use pink paint on a little finger to print a worm. Leave to dry so that it doesn't get smudged as you add more minibeasts.



Step 6. Continue to build up minibeasts in the garden using finger prints. Examples include making a spider body using a thumb print, or a caterpillar using finger prints joined up in a line. Leave to dry.



Step 7. Once dry, add details to the minibeasts, such as eyes, and legs, using with felt pens.