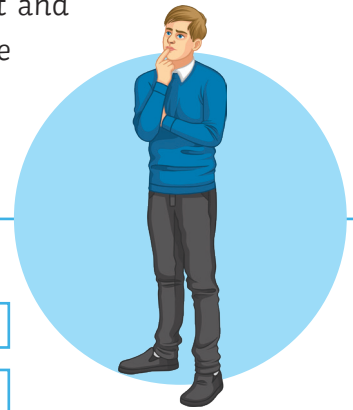


SPaGtacular Starters Complex Sentences

What You Need to Know

A complex sentence has an **independent clause** (a phrase with a subject and verb which makes sense on its own) and a **subordinate clause** (a phrase which doesn't make sense on its own). A good way to test to see if a sentence is complex is to divide it up – if half of it needs the other half to make sense, then it is complex.



Can you spot the complex sentences?

1. The elephant, which had been silent for days, started to trumpet.
2. Misha reached out of the window and picked a leaf from the tree.
3. With a start, Majid woke up.
4. Do you want to go with Samira or would you rather go with Lisa?
5. Suddenly, as if by magic, the wheel started to turn.

Now write two complex sentences of your own!



SPaGtacular Starters Complex Sentences

Answers

Can you spot the complex sentences?

1. The elephant, which had been silent for days, started to trumpet.
2. Misha reached out of the window and picked a leaf from the tree.
3. With a start, Majid woke up.
4. Do you want to go with Samira or would you rather go with Lisa?
5. Suddenly, as if by magic, the wheel started to turn.

