



---

# Welcome to Abbot's Lea School

# 70+ Years of Service

---



***Est: 1952***



# **Our Vision and Mission Statement**

---

To be the international Centre of Excellence in Autism education,  
research and professional development

## **Our Motto**

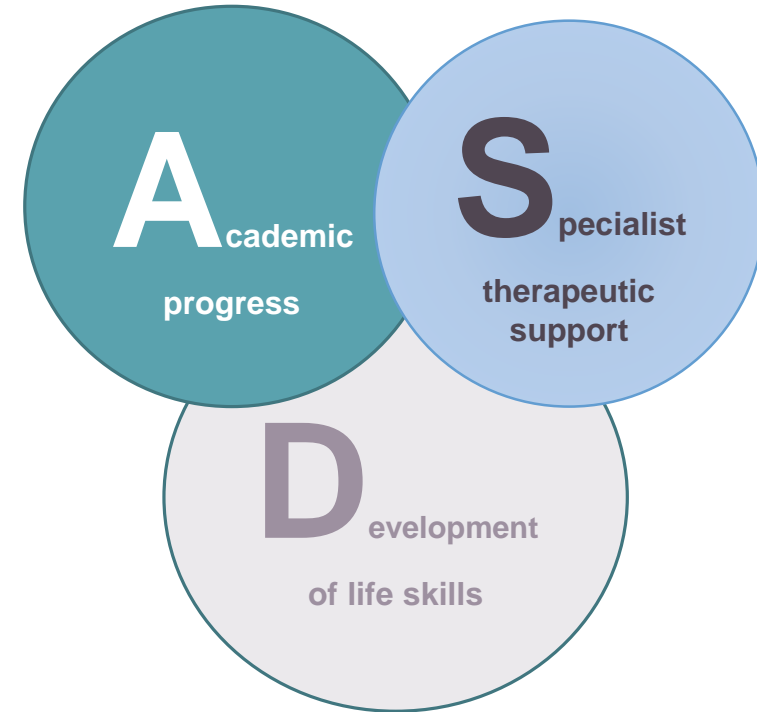
We want Abbot's Lea to be the best specialist school in the world!

# Our Philosophy of Education: The ASD Model ©

---

In our work with the students, we will focus equally on:

1. Academic progress
2. Specialist therapeutic support
3. Development of life skills



# Our holistic offer

---

## Primary and Secondary Departments (24 classes):

- Primary and Secondary Department, with 5 key stages:
  - Early Years Foundation Stage and Key Stage 1
  - Key Stage 2
  - Key Stage 3
  - Key Stage 4
  - Key Stage 5 (post-16)

## Therapy Department:

- Positive Behaviour Support (PBS)
- Speech and Language Therapy (SALT)
- Occupational Therapy and Sensory Integration (OT/SI)
- Child Psychotherapy
- Therapy Assistance

## Safeguarding Team

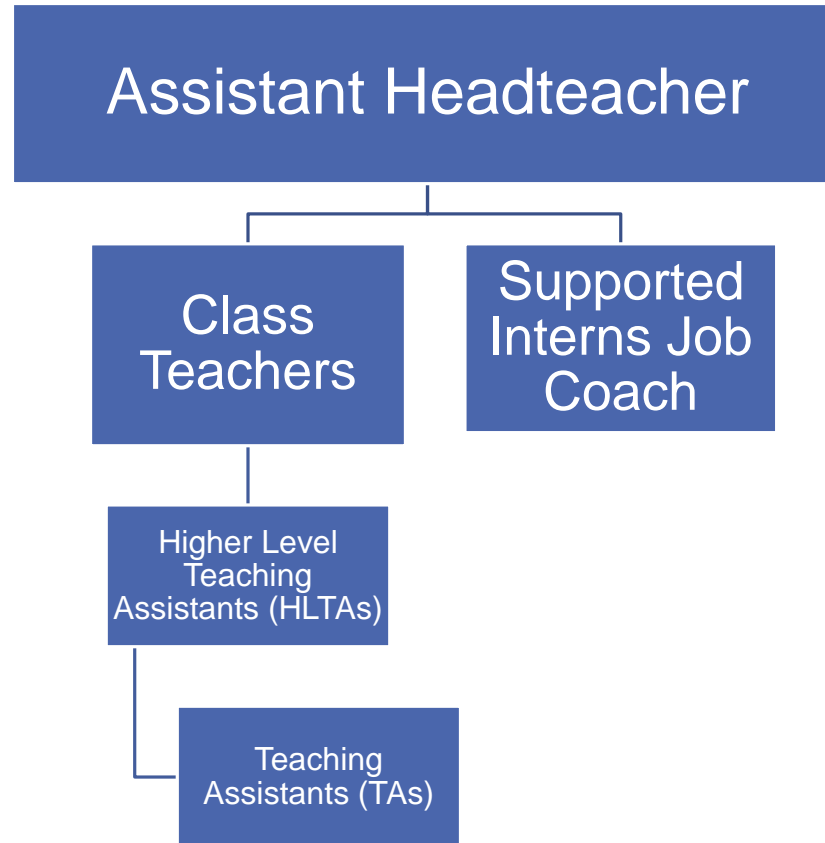
## School Business Support Team

## Governing Body

“It takes a village to raise a child.”  
-African Proverb

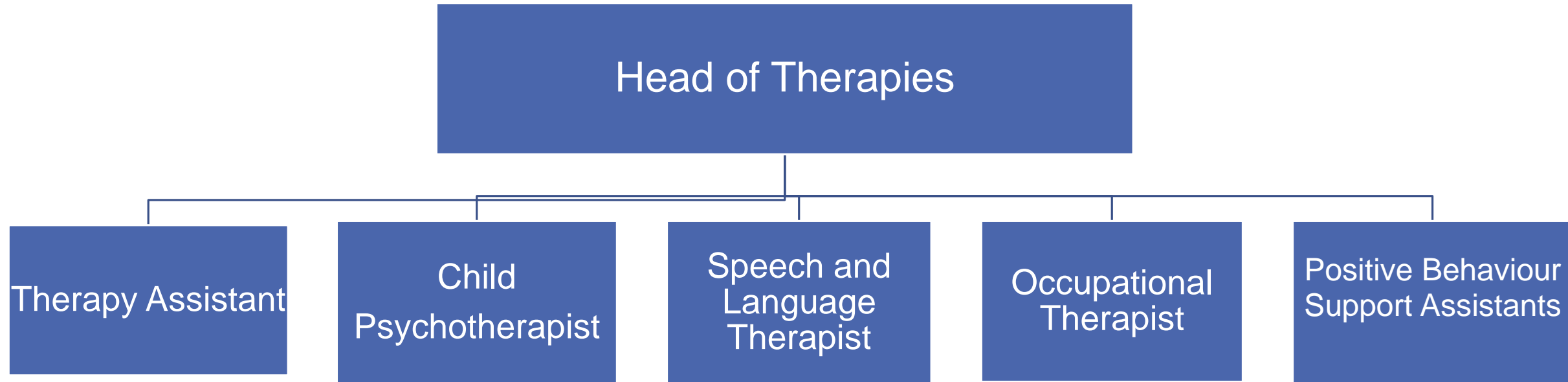
# Teaching and Learning

---

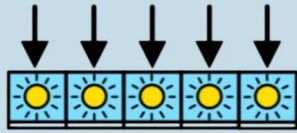


# Specialist therapeutic support

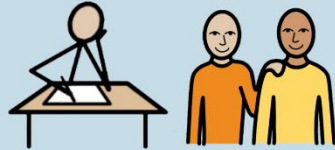
---



# Our Code of Conduct: The Golden Rules ©:



Be here. Every day...



Work hard and be nice



Never give up on yourself  
or others



Stay positive and be happy!

1. Be here. Every day...
2. Work hard and be nice
3. Never give up on yourself and others
4. Stay positive and be happy!



# School Development Plan

OUR LEADERSHIP AND MANAGEMENT	
REF	KEY STRATEGIC OBJECTIVES
LM1	<p>We will review, revise and re-launch our school's vision, including:</p> <ul style="list-style-type: none"> <li>- Our Philosophy of Education: The ASD Model ©,</li> <li>- Our Code of Conduct: The Golden Rules ©</li> <li>- The development of ALS Pledges © to students, families and staff as our key stakeholders</li> </ul>
LM2	<p>We will innovate, driving the standards of all that we do, and regularly review and improve our policies and procedures in light of:</p> <ul style="list-style-type: none"> <li>- any lessons learnt,</li> <li>- the needs of our school community,</li> <li>- any changing legislation and statutory guidance</li> <li>- any related research-based inquiry</li> <li>- external projects, practice review and assessment of our specialism by:                             <ul style="list-style-type: none"> <li>• School Improvement Partner (SIP)</li> <li>• Department for Education Partner (DfE)</li> <li>• National Autistic Society Adviser (NAS)</li> <li>• Any others engaged with the school over time</li> </ul> </li> </ul>
LM3	<p>We will work to improve our external evaluation by Ofsted, so that the next monitoring visit and/or inspection shows at least Good rating, in order to maintain, and where needed, improve, our professional reputation, as viewed through such external lens. Particular focus will be on meeting the two recommendations from Ofsted 2021 inspection:</p> <ul style="list-style-type: none"> <li>- Diversify accredited learning on offer to KS4 and KS5 students</li> <li>- Unite the team so that all staff members feel supported and able to be on board with the vision, as well as the policies and practices of the school.</li> </ul>
LM4	<p>We will actively engage in appraising our options related to national and local agenda, including (but not limited to):</p> <ul style="list-style-type: none"> <li>- Academisation</li> <li>- SEND Sufficiency</li> <li>- Designation, size and accommodation of Abbot's Lea School</li> <li>- Rising costs of living and school operation</li> </ul>
KPI	<p>Abbot's Lea School is financially stable, clear about its operation, going from strength to strength, as supported by the feedback from a range of internal (students, families and staff) and external stakeholders, internal audits, self-evaluation and a range of inspections.</p>

SDP 2022-24  
Abbot's Lea School ©

3

OUR STUDENTS	
REF	KEY STRATEGIC OBJECTIVES
S1	<p>We will ensure that students attend well and are engaged in school-based learning</p> <ul style="list-style-type: none"> <li>- We will re-launch expectations of 100% attendance</li> <li>- We will launch a Support Hub to help those who struggle with school attendance and engagement in school-based learning</li> <li>- We will launch a Support Hub to help those who struggle with school attendance and engagement in school-based learning</li> <li>- We will work closely with the Local Authority and associated agencies where the internal school strategies do not bring about positive change in attendance and engagement in school-based learning</li> </ul>



Our Students



Our Team



Our Resources

<http://www.abbotsleaschool.co.uk/wp-content/uploads/2022/09/SDP-2022-24.pdf>

# Admissions

---

**207**

Our school's official DfE approved admission number

**227**

Adding permissible 10% (as per DfE guidance)

**272**

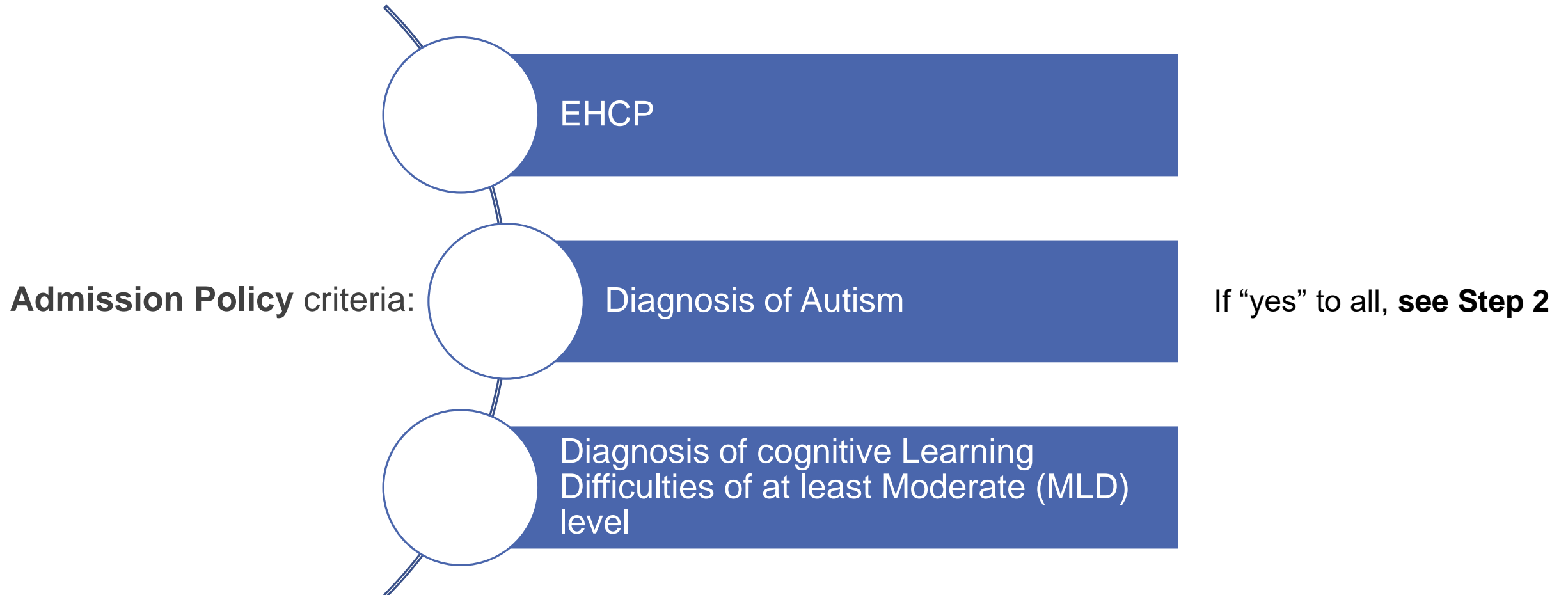
Current roll (in light of LCC SEND pressures for admissions)

Current oversubscription level: **45 students**  
(~20% over maximum permissible capacity)



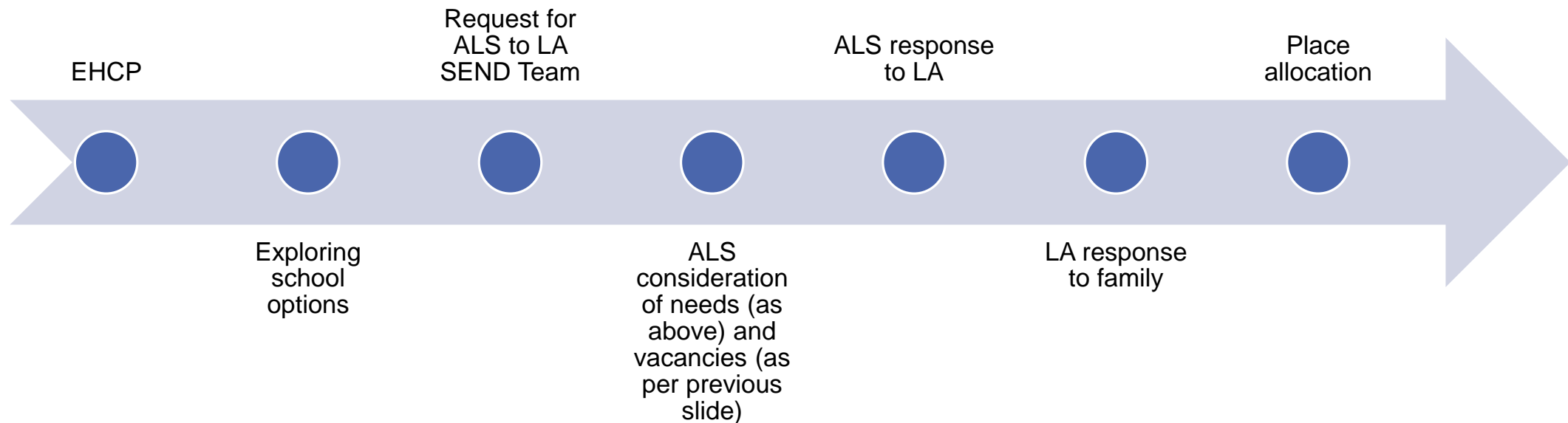
# Admission Process – STEP 1 (criteria)

---



# Admission Process – STEP 2 (processing)

---



# Admission Process – STEP 3 (admission)

---

## **Admission:**

- Once a place is allocated, a start date is confirmed by the LA.
- Our school Office team begin the administrative process of admission.

**If admission is in September**, Transition Week in July is used to help with the change of placement. This is the last week of each school year and during that time, all students are grouped in their next year's classes. We then invite all students who will be joining us in September to spend as much of their week with us as possible to help with familiarisation and to lower anxiety over the summer.

**If it is an in-year admission**, flexible approach is used to achieve the same aim, and to meet the Class Teacher and see the class in operation prior to start date.

# Admission Process – practicalities

- Uniform
- Transport
- Attendance
- Communications
- Co-production and engagement



# Family Engagement and Support

**Family Training**  
**AUTISM AND GIRLS**

There are likely to be many autistic girls whose needs are not identified or understood. Girls experience significantly more barriers to diagnosis and support than boys. In this session, we will introduce the debate around autism and gender, identify key issues and provide support strategies for families and school staff. Our guests will be able to share their personal, professional and academic perspectives on this topic as well as answer your questions.

**9 MAY 2023**  
EARLY SESSION AT 12 PM  
LATE SESSION AT 6 PM

**FREE REGISTRATION**  
ONLINE VIA ZOOM

  
  
**MICA COLEMAN**  
Autistic SEND Leader

  
**MICHELLE BLAKE**  
Autistic Lecturer and Researcher

**Research café**  
**COMIC BOOKS AND LEARNING**

Comic books have long been a popular form of entertainment, but they also have significant potential for educational purposes, particularly for autistic individuals. Dr Muršić will share initial findings from our whole-school research project and explore the unique benefits of using comic books as a tool for learning. You will learn quick and practical strategies for incorporating comics and graphic novels into your daily routines.

Do not miss this opportunity to learn more about this fascinating and innovative approach to education!

**23 MAY 2023**  
FROM 3 PM TO 4 PM (BST)  
ONLINE VIA ZOOM

Your host:  
  
**DR SARA MURŠIĆ**  
Head of Autism Research and Development

**FREE REGISTRATION**

- Training sessions and advice
- Signposting to support available
- Workshops and cultural sessions
- Coffee mornings (PTA)
- School tours for families

**FAMILY COFFEE MORNING**

All families are welcome at our relaxing and friendly Friday Coffee Morning - bring your dearest and meet up with other families, our staff, governors and trainers.

**Join us every Friday**  
(apart from last week of each term)  
**between 9:30 and 11:00**  
**at Abbot's Lea School, L25 6EE**

- MEET OTHER FAMILIES AND OUR TEAM
- JOIN OPEN ASSEMBLIES
- LEARN MORE ABOUT OUR SCHOOL AND SUPPORT
- TEACH US ABOUT YOUR PARENTING AND SUPPORT
- HAVE FUN!


ABBOTSLIASCHOOL.CO.UK @ABBOTSLIASCHOOL

**FAB! 2022-23**


**JOIN OUR COMMUNITY**  
**FRIENDS OF ABBOT'S LEA SCHOOL**

Activities include:  
Family Coffee morning  
Fundraising  
Fun Fair organisation  
Weekend meet-ups  
Nature/Park walks  
Quiz and movie nights





**Mrs Ania Hildrey, Headteacher of Abbot's Lea School**

**[headteacher@abbotsleaschool.co.uk](mailto:headteacher@abbotsleaschool.co.uk)**

**[reception@abbotsleaschool.co.uk](mailto:reception@abbotsleaschool.co.uk)**

**Twitter and Facebook:**

**@AbbotsLeaSchool**



# School Tours with our Assistant Headteachers

---

**Miss Gibney**  
**Assistant Headteacher – Primary Department**

**Early Years and KS1 (age 3-7)**  
**Key Stage 2 (age 7-11)**



**Mr Mason**  
**Assistant Headteacher – Secondary Department**

**Key Stage 3 (age 11-14)**  
**Key Stage 4 (age 14-16)**  
**Key Stage 5 (post-16)**

