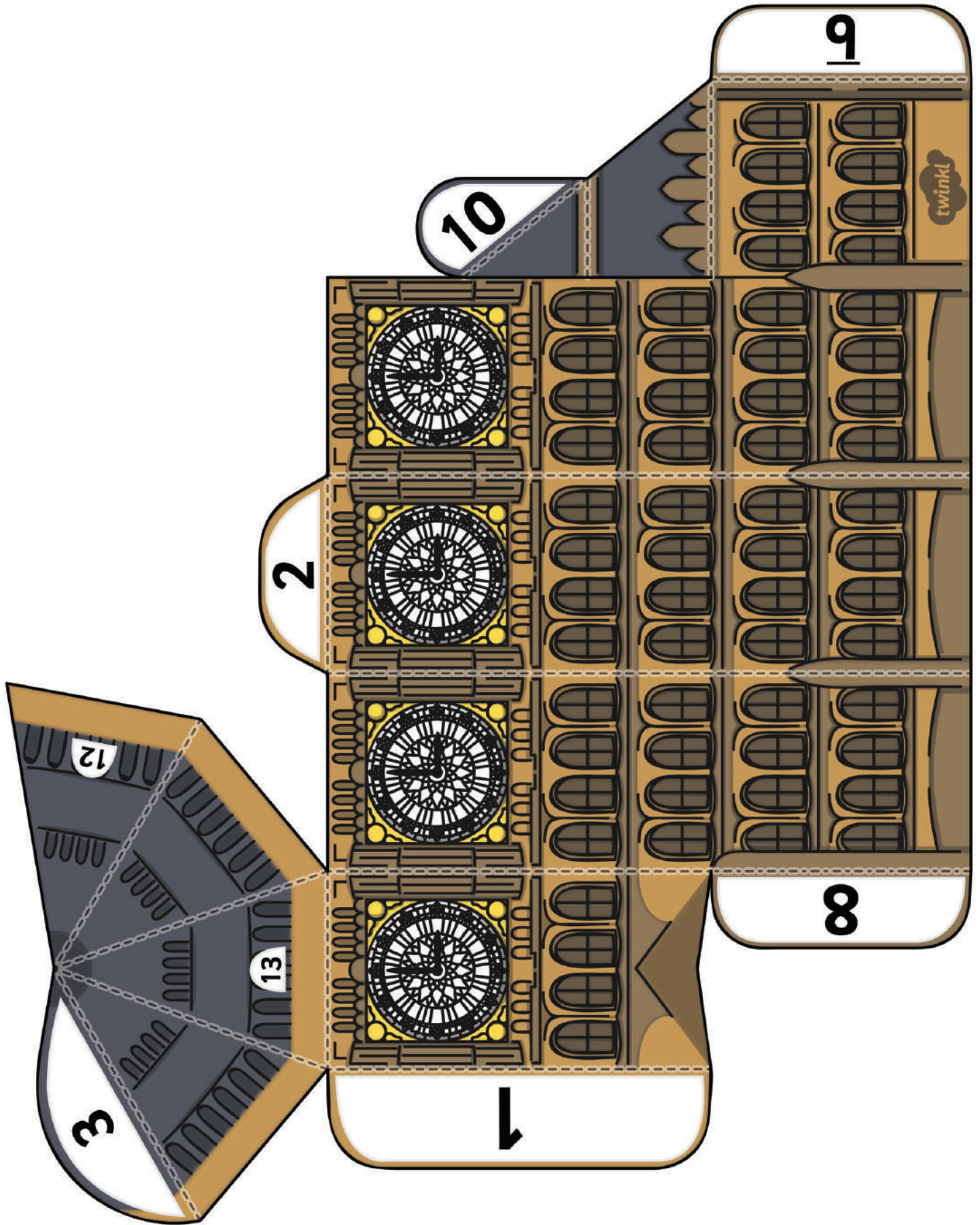


# Big Ben Paper Model

## Instructions

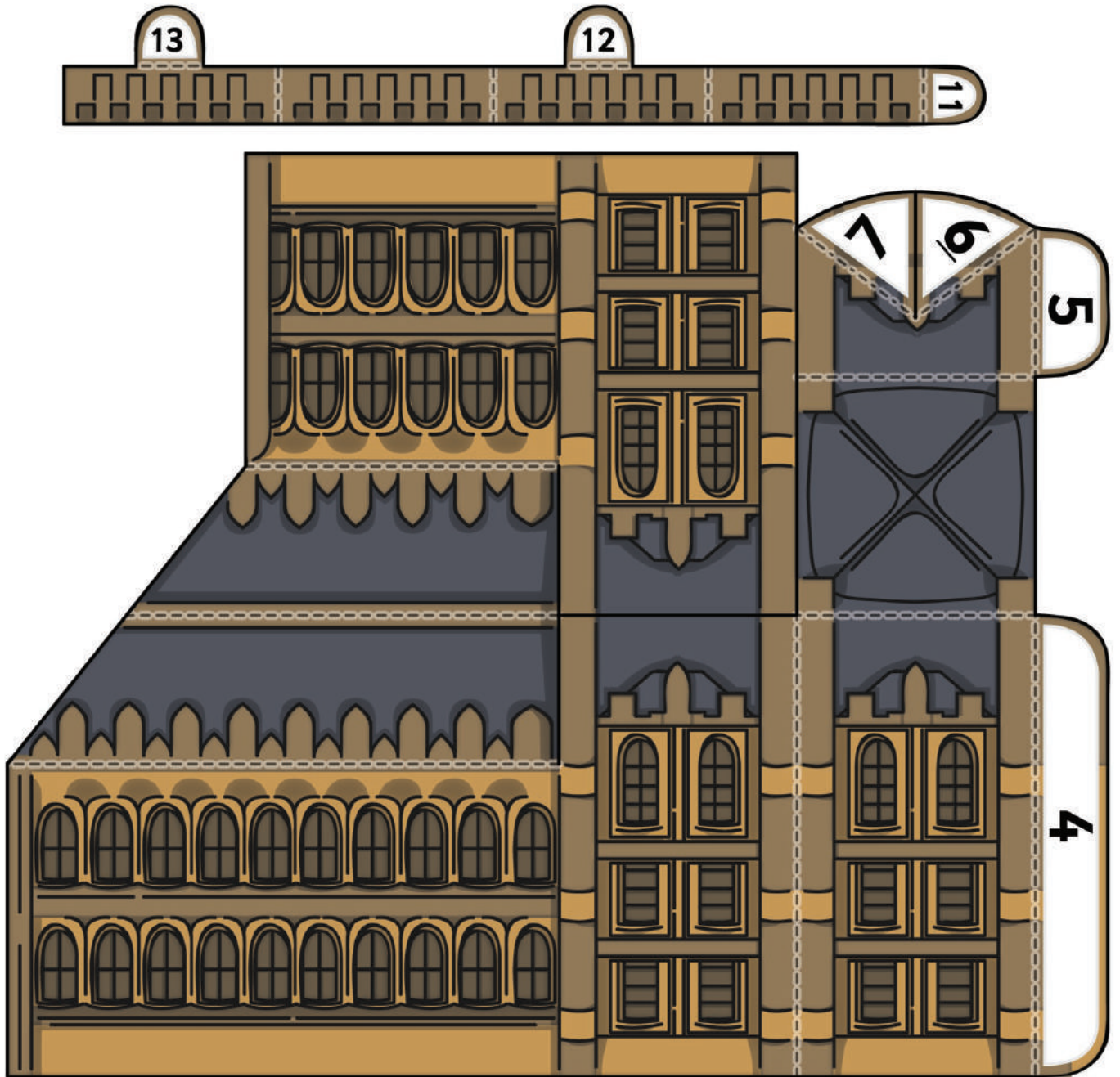
1. Begin by cutting out the shapes on page 1. These pieces will make the clock tower. Cut along the thick black lines. Some of these lines go into the model, so be careful as you cut them. NB. Cut down to the second fold next to tab 10.
2. Fold all dotted lines into a hill fold (folded down).
3. Apply glue to tab 1 and stick to form the clock tower.
4. Apply glue to tab 2 and 3. Tuck tab 3 beneath tab 2 and carefully stick the roof section to form the spire.
5. Cut out the shapes on page 2. The pieces will make the Palace of Westminster. Cut along the thick black lines. Some of these lines go into the model, so be careful as you cut them – refer to the diagram below. NB. Make sure you cut the line between tab 6 and 7.
6. Fold all dotted lines into a hill fold (folded down).
7. Apply glue to tab 4 and stick to the corresponding section to form a tower
8. Apply glue to tabs 5, 6 and 7. Carefully fold and stick the tabs to complete the tower.
9. Apply glue to tabs 8 and 9. Stick tab 9 to the longer side of the palace and tab 8 to the shorter side.
10. Apply glue to tab 10 and tuck it under to complete the roof.
11. Apply glue to tab 11 and stick to the end to form a square.
12. Apply glue to tabs 12 and 13. Place the square over the spire and stick to the corresponding numbers.

Your model of Big Ben is now complete!



Hill Fold (Fold up)

Valley Fold (Fold down)

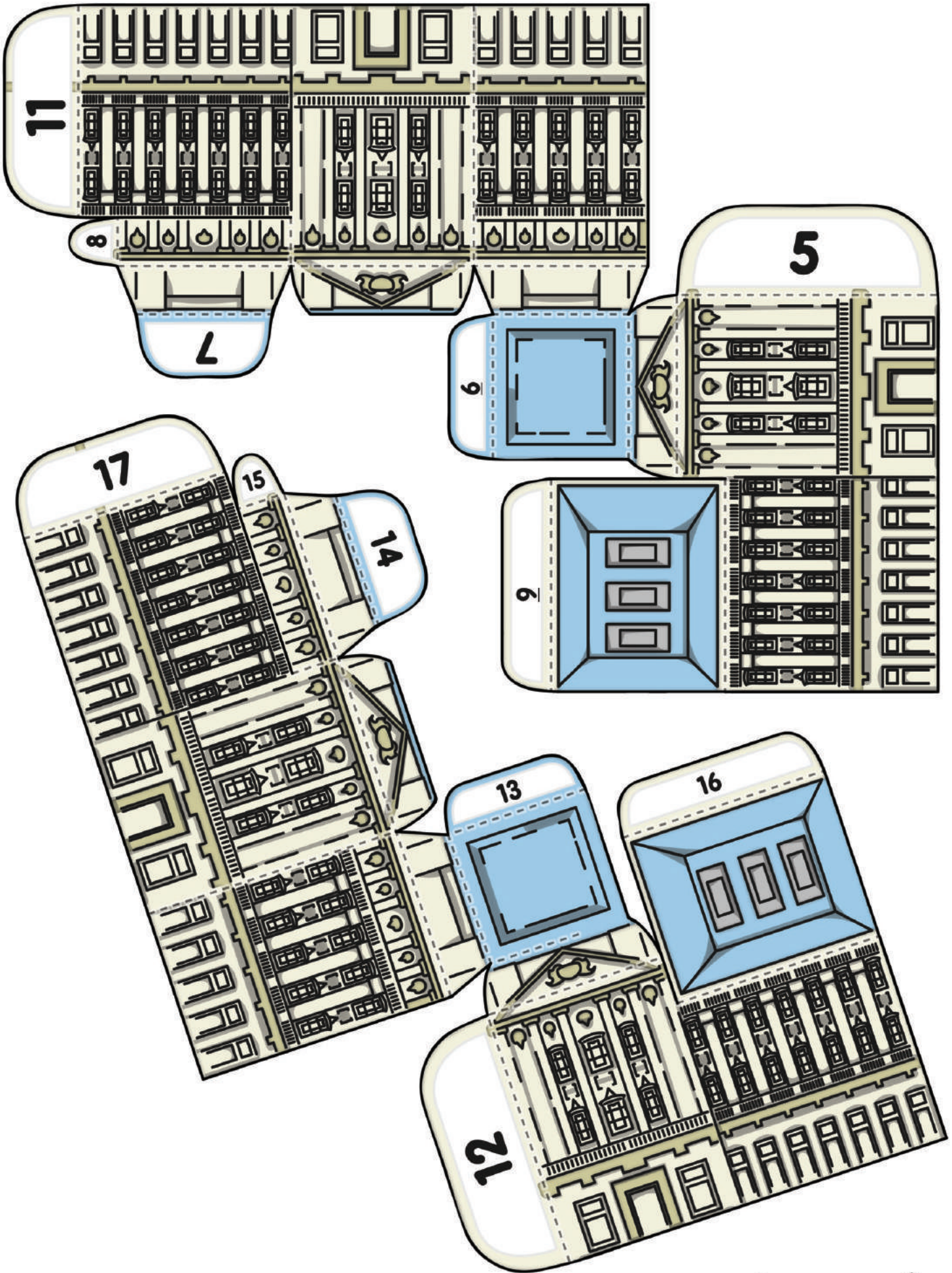


# Buckingham Palace Paper Model

## Instructions

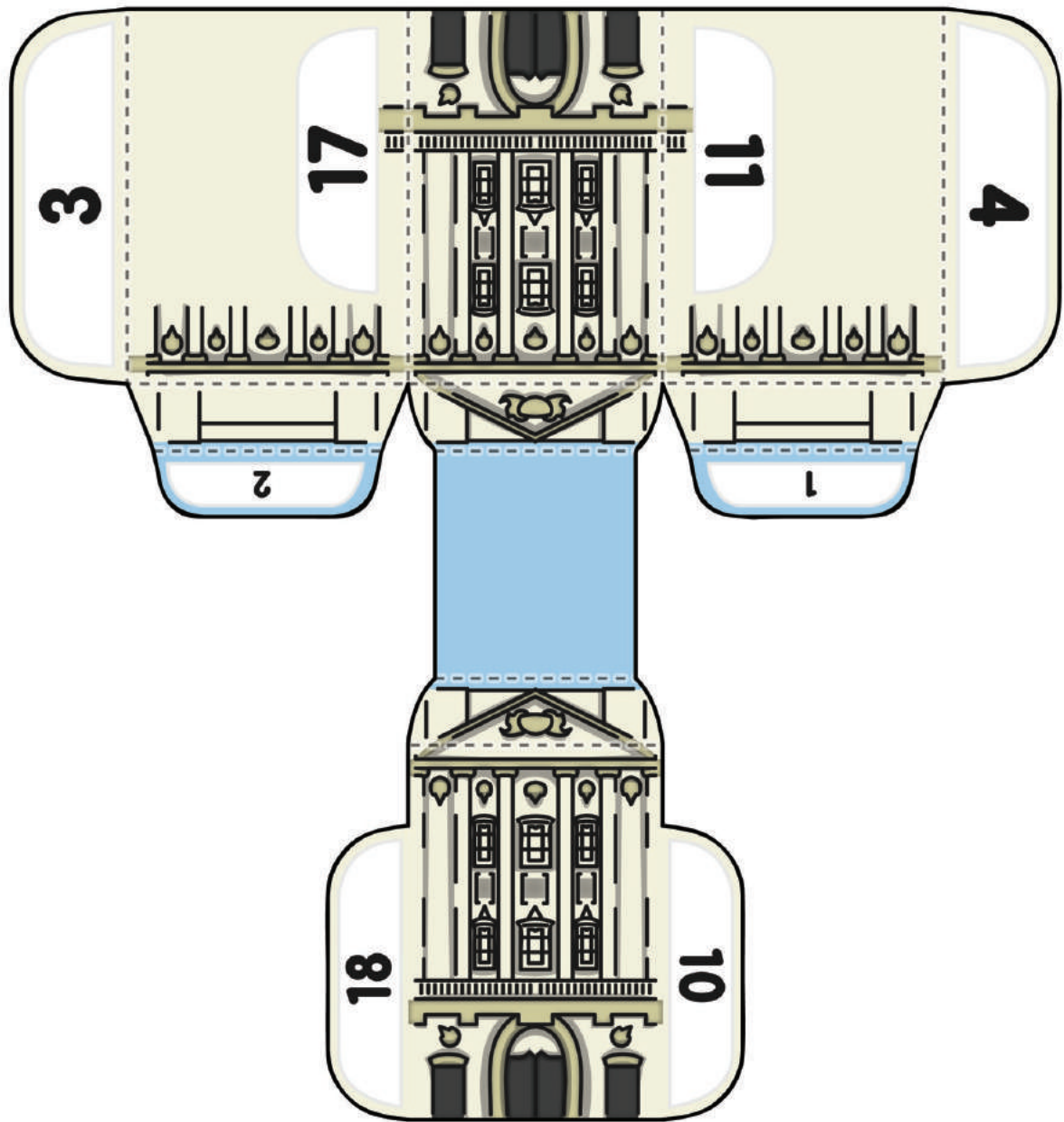
1. Begin by cutting out the two shapes on page 1. These pieces will make the two wings of the palace. Cut along the thick black lines. Some of these lines go into the model, so be careful as you cut them. Note that you will need to cut along the top of the windows by tab 8.
2. Fold all dotted lines into a hill fold (folded down).
3. Start with the first wing. Apply glue to tab 5 and tab 6. Stick tab 5 to the underside of the adjacent wall. Stick tab 6 to form the third side of the tower.
4. Apply glue to tabs 7 and 8. Stick tab 7 to the underside of the roof and tab 8 to the underside of the adjacent wall.
5. Apply glue to tab 9 and stick to the underside of the adjacent wall.
6. Now make the second wing. Apply glue to tab 12 and tab 13. Stick tab 12 to the underside of the adjacent wall. Stick tab 13 to form the third side of the tower.
7. Apply glue to tabs 13 and 14. Stick tab 14 to the underside of the roof and tab 8 to the underside of the adjacent wall.
8. Apply glue to tab 16 and stick to the underside of the adjacent wall.
9. Cut out the shape on page 2. This piece will make the central building. Cut along the thick black lines. Some of these lines go into the model, so be careful as you cut them.
10. Fold all dotted lines into a hill fold (folded down).
11. Apply glue to tabs 1 and 2. Tuck them under the roof and stick down.
12. Apply glue to tabs 3 and 4. Carefully glue each to their corresponding section to make a tower.
13. Apply glue to tabs 10 and 11. Stick tab 11 to label 11 and tab 10 to the underside of the wall.
14. Apply glue to tabs 17 and 18. Stick tab 17 to label 17 and tab 18 to the underside of the wall.

Your Buckingham Palace model is now complete and fit for a Queen!



Hill Fold (Fold up)

Valley Fold (Fold down)



# Tower Bridge Paper Model

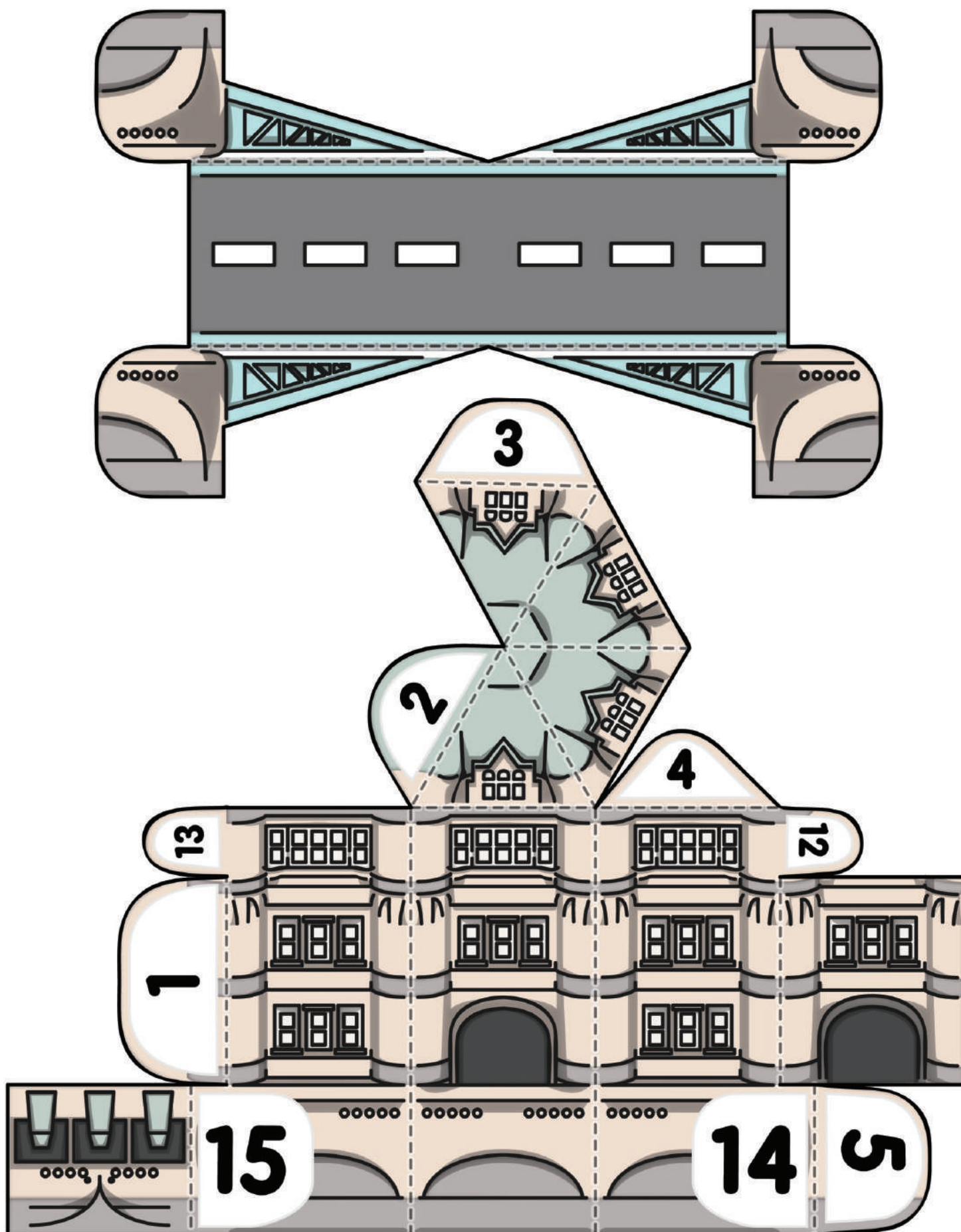
## Instructions

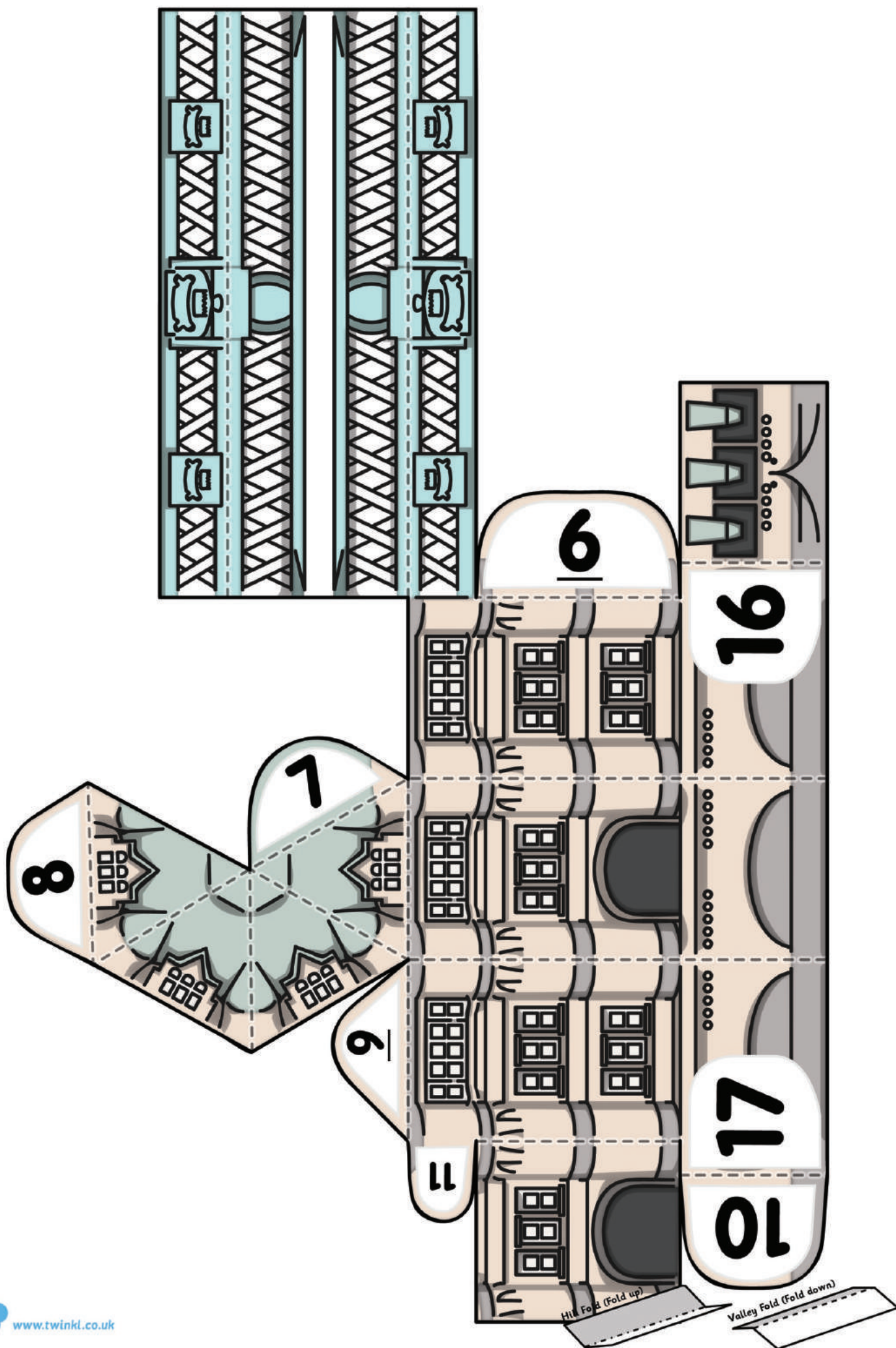
1. Begin by cutting out the two shapes on page 1. These shapes will form one of the towers and the road bridge. Cut along the thick black lines taking care to cut around tabs 1, 5, 12 and 13.
2. Fold all dotted lines into a hill fold (folded downwards) as shown on the key.
3. Apply glue to tabs 2, 3 and 4. Stick tab 4 to the underside of the roof. Stick tab 2 and 3 underneath the roof section.
4. Apply glue to tabs 1 and 5 and stick each to their corresponding sections to complete the tower.
5. Cut out the shape on page 2. This will form the second tower and the upper footbridge. Cut along the thick black lines taking care to cut around tabs 6, 10 and 11.
6. Fold all dotted lines into a hill fold (folded downwards) as shown on the key.
7. Apply glue to tabs 7, 8 and 9. Stick tab 7 to the underside of the roof. Stick tab 8 and 9 underneath the roof section.
8. Apply glue to tabs 6 and 10 and stick each to their corresponding sections to complete the tower.
9. Apply glue to tab 11 and stick it to the underside of the upper footbridge.
10. Apply glue to tabs 12 and 13 and stick to the underside of the upper footbridge.
11. Apply glue to tabs 14, 15, 16 and 17 and stick each end of the road bridge to the towers.

Your Tower Bridge paper model is now complete!

# Tower Bridge Paper Model

Page 1/2



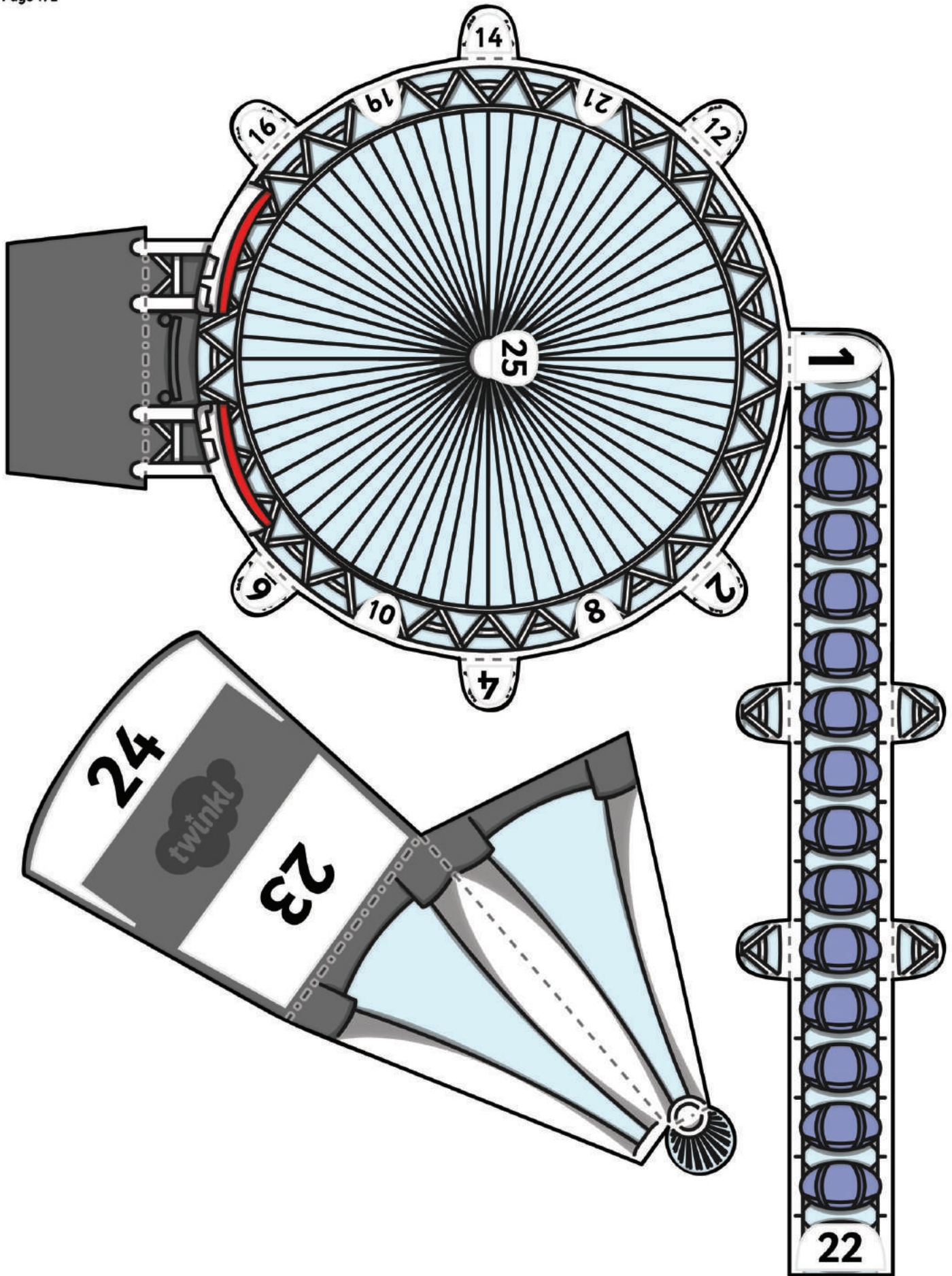


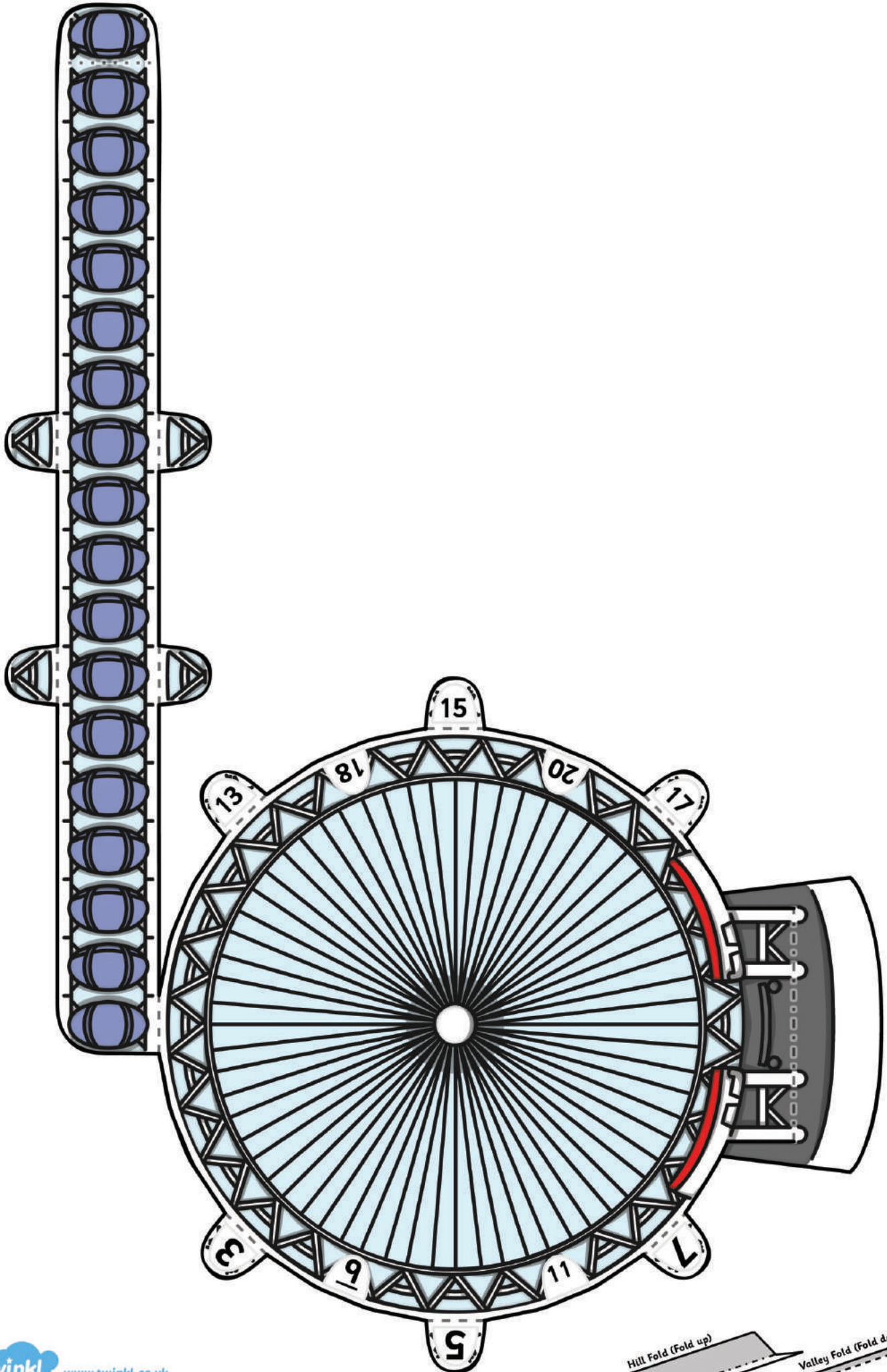
# London Eye Paper Model

## Instructions

1. Begin by cutting out the two shapes on page 1. These will form one side of the the big wheel and the A-frame.
2. Cut along the thick black lines, taking care not to cut off any of the small tabs.
3. Fold all dotted lines into a hill fold (folded downwards) or valley fold (folded upwards) as shown on the key. Note the valley fold at the base of the wheel.
4. Apply glue to tabs 2, 4, 6, 8 and 10. Wrap the long section with the capsules on it around the wheel and stick to the tabs.
5. Cut out the shape on page 2. This will form the other side of the big wheel.
6. Fold all dotted lines into a hill fold (folded downwards) or valley fold (folded upwards) as shown on the key. Note the valley fold at the base of the wheel.
7. Apply glue to tabs 13, 15, 17, 18 and 20. Wrap the long section with the capsules on it around the wheel and stick to the tabs.
8. Apply glue to tabs 1, 3, 5, 7, 9 and 11 on one half of the wheel and tabs 12, 14, 16 19 and 21 on the other half.
9. Place the two sides of the wheel together. Stick tab 1 to the underside of the top of the opposite side of the wheel. Carefully stick down all the other tabs, one half at a time. It will help to place your fingers inside the wheel.
10. Apply glue to tab 22 and stick to the corresponding section to complete the wheel.
11. Apply glue to tabs 23 and 24 of the A-frame. Stick the flaps at the base of the wheel to their corresponding sections – the larger flap should be on tab 23.
12. Finally, apply glue to tab 25 and carefully stick the central hub in place.

Your London Eye model is now complete. Enjoy the view!





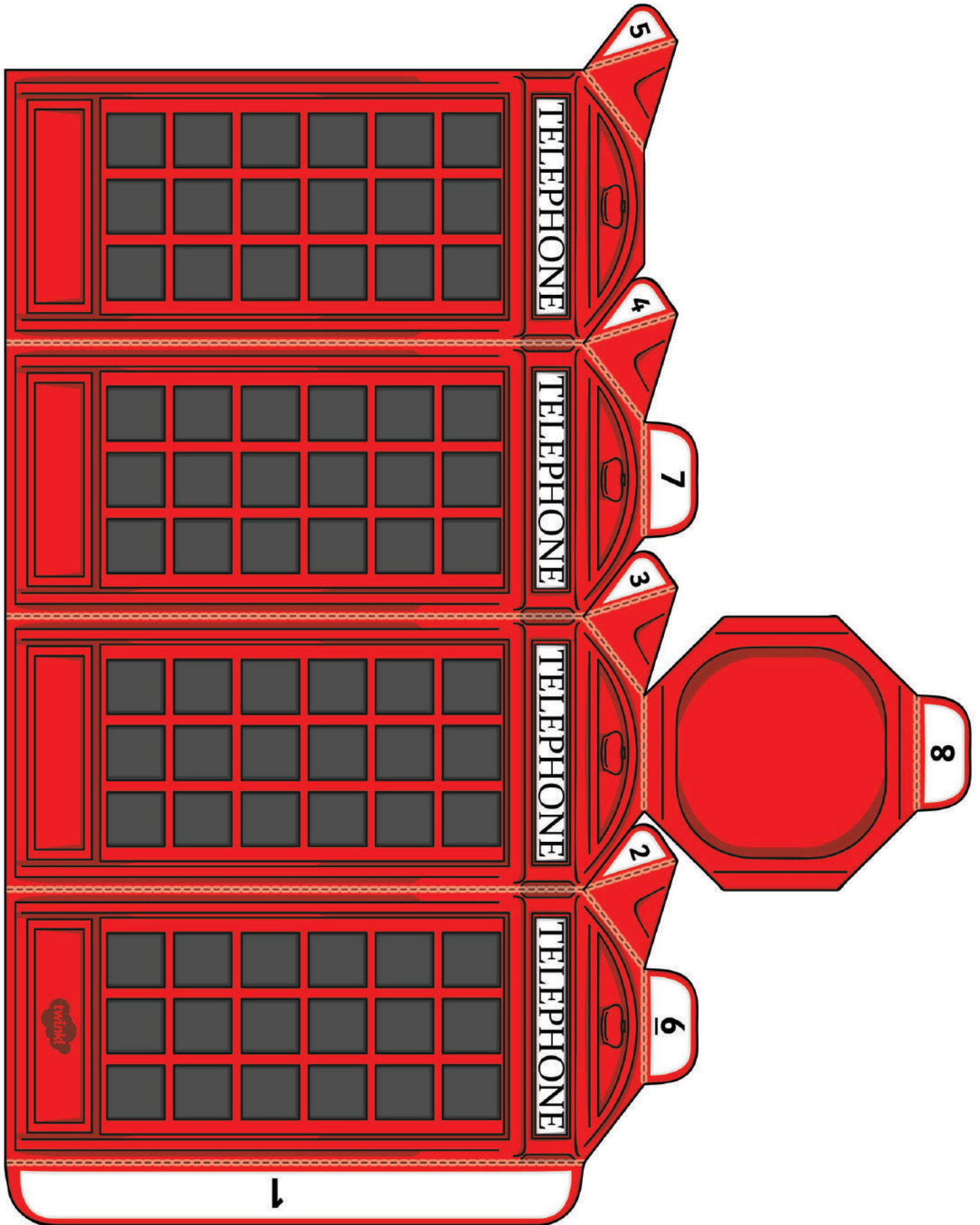
# London Phone Box Paper Model

## Instructions

1. Begin by cutting out the shapes on page 1. Cut along the thick black lines, making sure you cut the lines next to tabs 2, 3 and 4.
2. Fold all dotted lines into a hill fold (folded downwards).
3. Apply glue to tab 4 and stick to the inside of the phone box.
4. Repeat the above step for tab 3 and tab 2.
5. Apply glue to tab 1 and tab 5 simultaneously. Stick tab 1 to the side panel of the phone box and tab 5 to the inside of the phone box.
6. Apply glue to tabs 6, 7 and 8 simultaneously. Stick the tabs to the roof of the phone box.

Your London Eye model is now complete. Enjoy the view!

# London Phone Box Paper Model



Hill Fold (Fold up)

Valley Fold (Fold down)