



**George Weston  
Intern 2019-2020**

"Hello, I am George Weston, and I am doing a supported internship at Regenda within the Asset Management department. My manager Ken, and my team are super understanding and genuinely find my humour enjoyable, we get on well.

The best thing from this job, are the unusual ways that you apply the skills you have learned, for example, I can now hold onto an idea longer, giving me more time to work on it. I have already had a few that I love working on. I would wholeheartedly recommend a supported internship; it's something different and enjoyable to do with your remaining time in school. The only person who can get yourself, and your life out of a rut is you."



# Supported Internships

## Key Stage 5

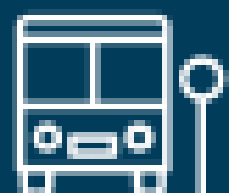


### What is a Supported Internship?

Supported internships are a structured study programme based primarily at an employer. They enable young people aged 16-24 with a statement of SEN, or an Education, Health and Care plan to achieve sustainable paid employment by equipping them with the skills they need for work, through learning in the workplace.

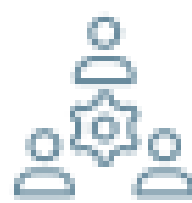
Supported interns are still students of our Key stage five provision and remain enrolled at Abbot's Lea School.

They are classed as in full time education and the programme should not affect any benefit entitlement.



### Travel Training

Independent Travel Training provides young people with special educational needs the skills and confidence to make the home-to-work journey independently on public transport. The programme takes approximately 6 weeks, but this is dependent on the young person and their individual needs.



### Who do you work with?

You will be working 4 days a week in the workplace (needs based flexibility could apply) with the help of your supervisor and your Job Coach from the school. They will be there to support you everyday to achieve your goals. Once a week, you will have a Study Day. During the study day you will meet the other interns of Abbot's Lea School, and you will work towards qualifications, and improving your life skills and independence.



### Some of our employer partners

The Regenda Group

Cadent  
Your Gas Network

aloft  
HOTELS



National Trust

Liverpool Women's NHS Foundation Trust

IMAGINE INDEPENDENCE

Flowerbug  
Floral Design



### Are you interested?

**Mr Nathan Fernyhough  
Employability Manager**

E: [nathan.fernough@abbotsleaschool.co.uk](mailto:nathan.fernough@abbotsleaschool.co.uk)

T: 0151 428 1161

M: 07940 700 733