

## Family Training

# AUTISM AND GIRLS

There are likely to be many autistic girls whose needs are not identified or understood. Girls experience significantly more barriers to diagnosis and support than boys. In this session, we will introduce the debate around autism and gender, identify key issues and provide support strategies for families and school staff. Our guests will be able to share their personal, professional and academic perspectives on this topic as well as answer your questions.

 **9 MAY 2023**

 **EARLY SESSION AT 12 PM**

 **LATE SESSION AT 6 PM**

**FREE REGISTRATION**

**ONLINE VIA ZOOM**



**MICA COLEMAN**

Autistic SEND Leader



**MICHELLE BLAKE**

Autistic Lecturer and Researcher

**Please, keep  
your microphone  
on mute**

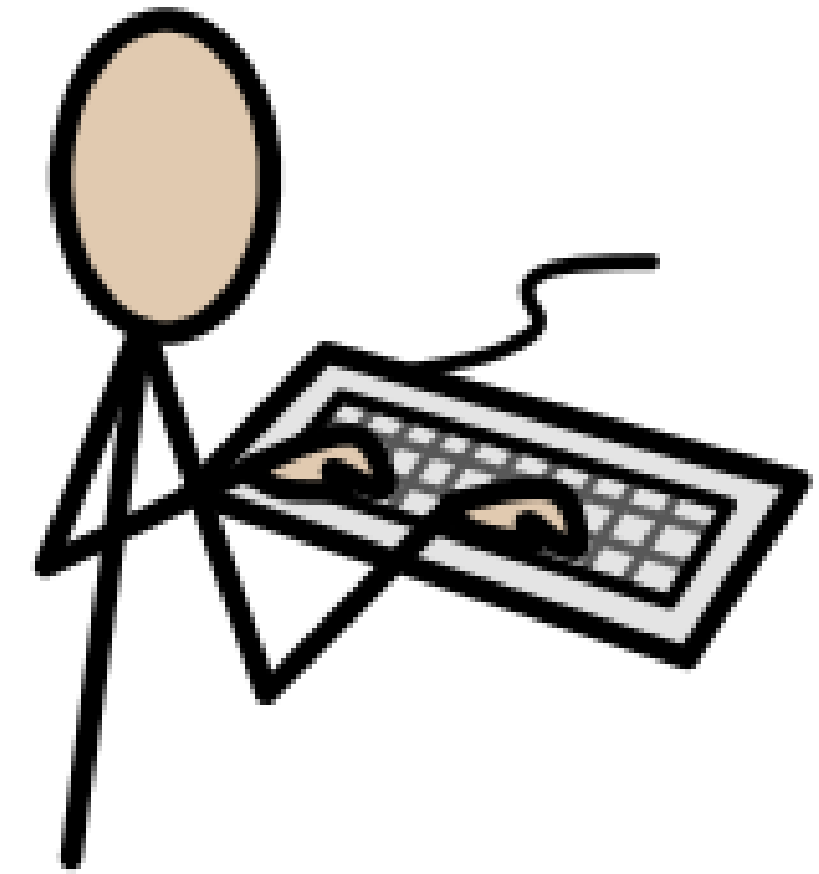
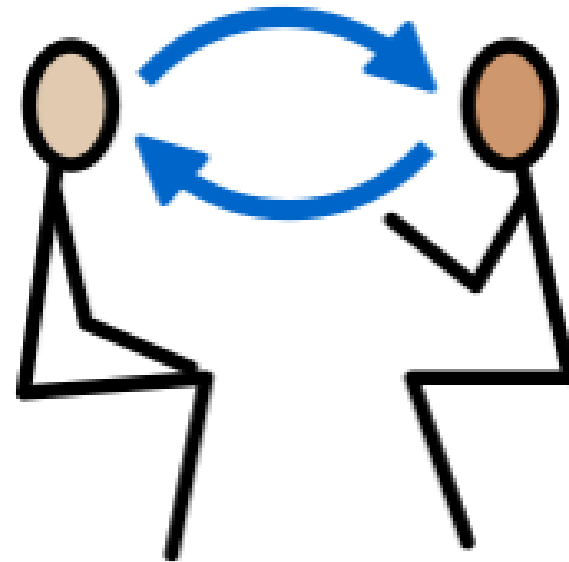
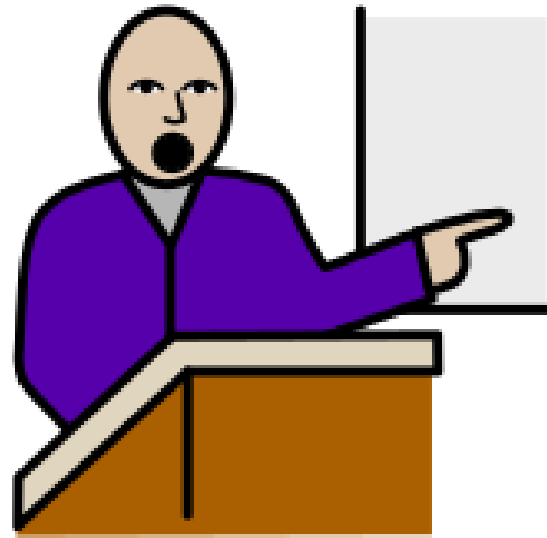
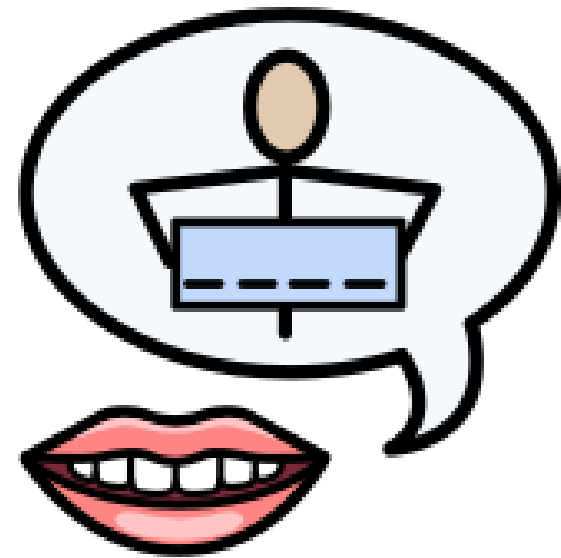


**This session is  
recorded for our  
website**

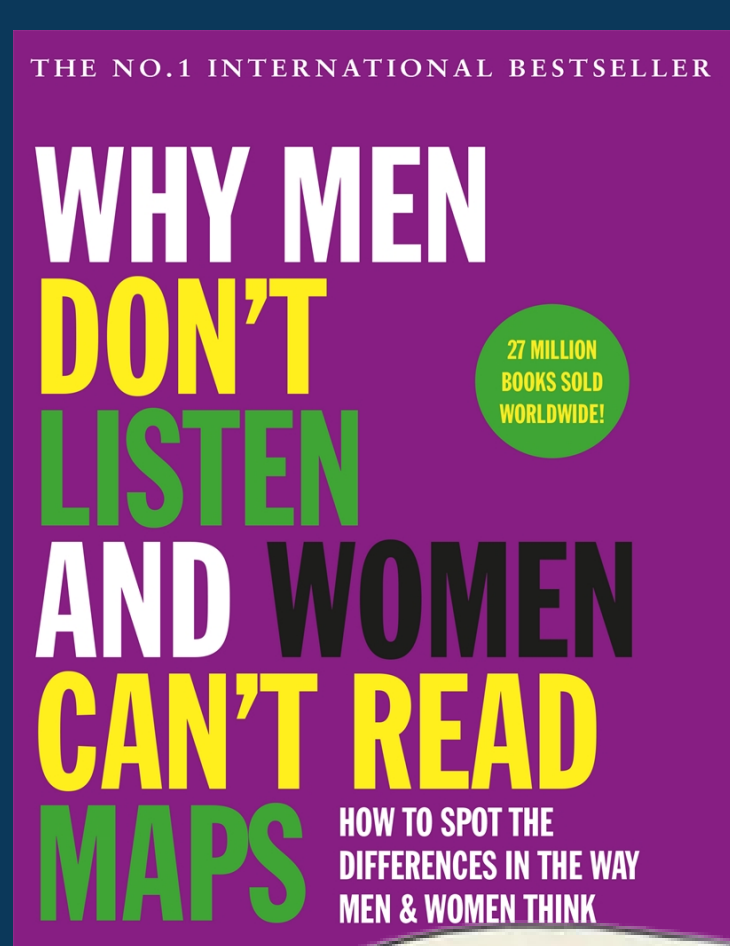
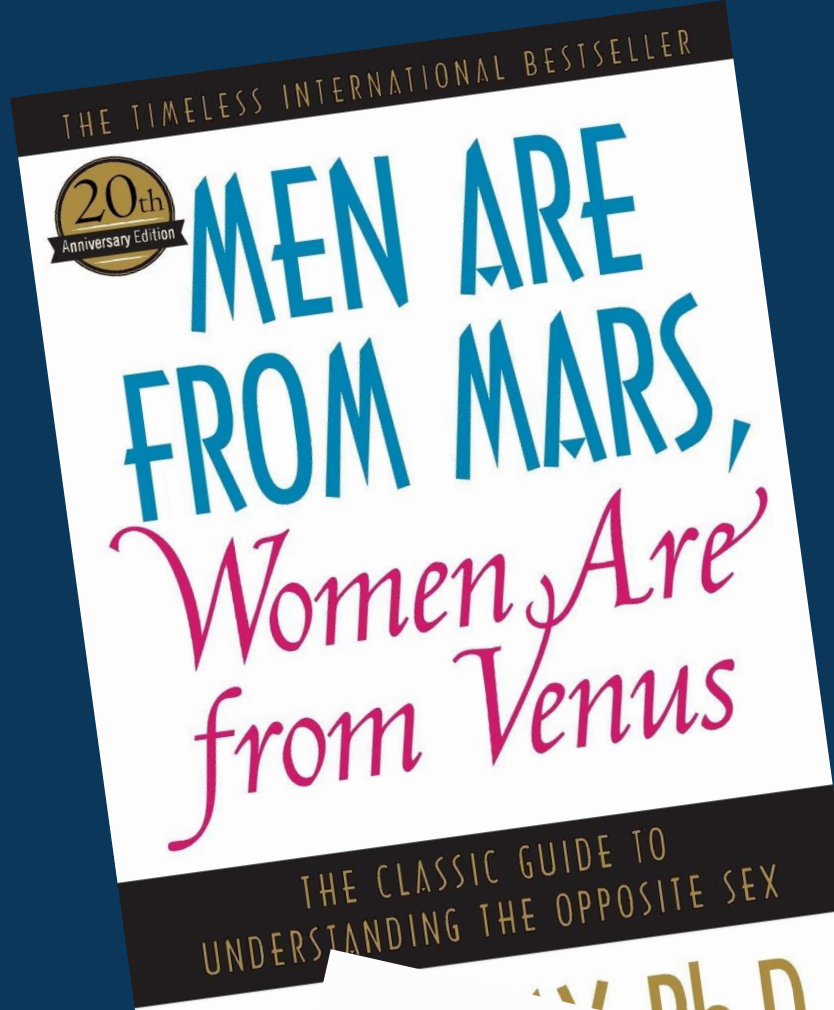


# Plan for this session:

1. Introduction (Sara)
2. Presentation by Mica
3. **Change - no presentation by Michelle**
4. Discussion (Mica, Sara + your questions)



You can use the chat function to introduce yourself, share any comments or questions

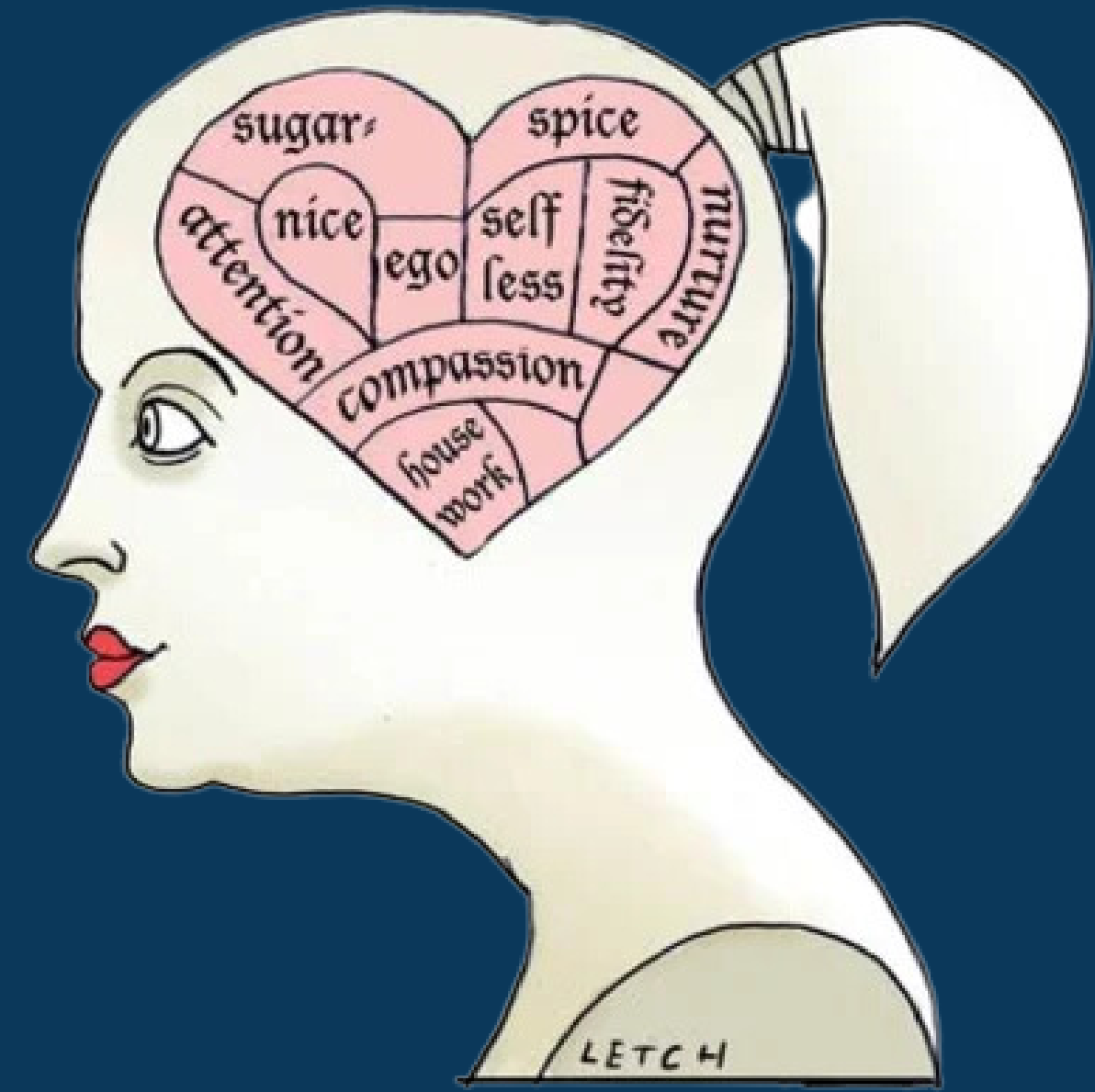
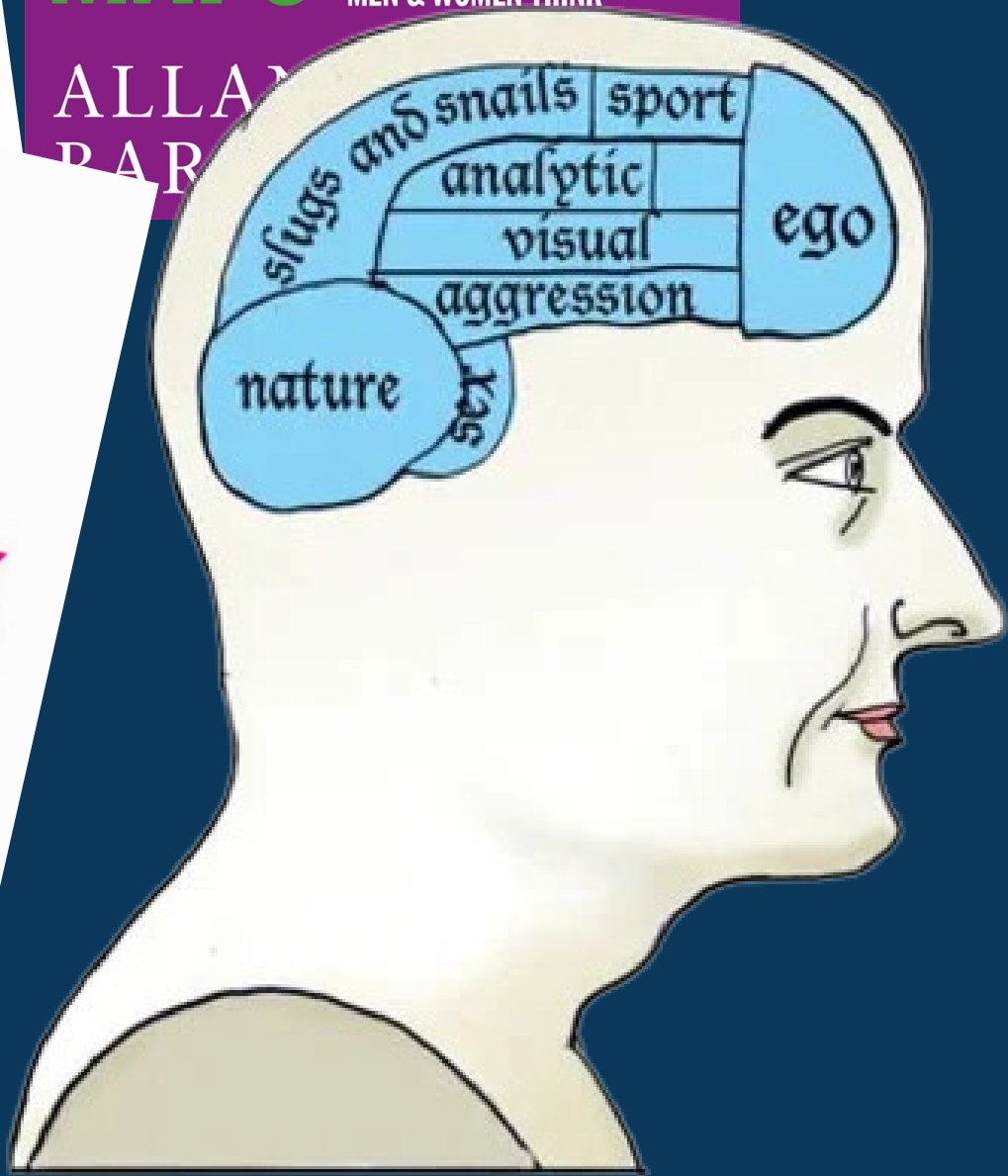
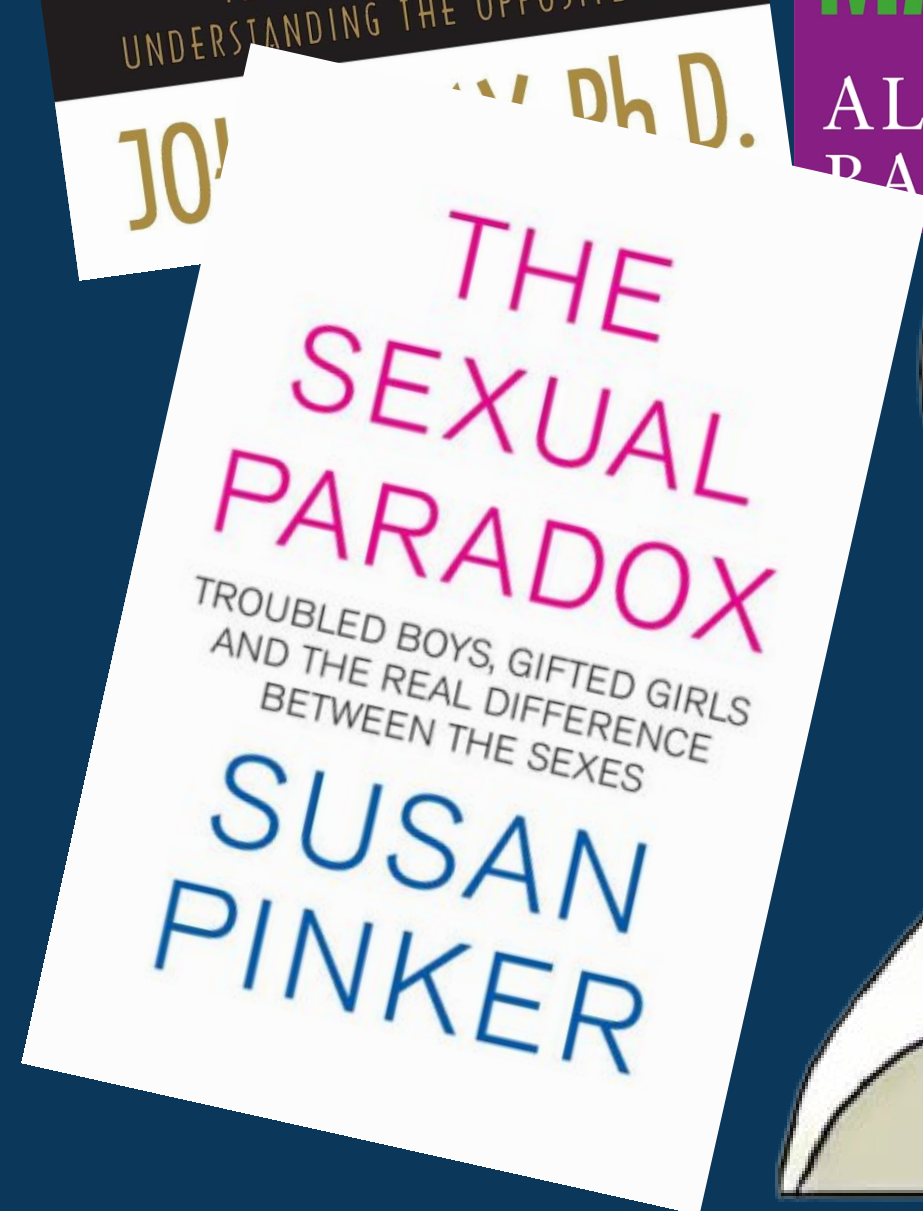


Similarities  
Differences

**Awareness**

**Understanding**

**Meaningful Change**





- **Prevalence**  
(diagnostic bias)
- **Social Communication**  
(norms and upbringing)
- **Masking**
- **Special Interests**  
(more common interests)
- **Co-occurring Conditions**  
(mental health)

# Females on the Autism Spectrum

## Behaviour

Less prone to act out physically or aggressively

Intense focus on a particular subject, often involving animals or classic literature

Appears anxious when there are changes in routine

Observes human behaviour, learning to mask difficulties

Practices rituals that appear to have no function

May play with dolls or toys well beyond the typical age for these items

Tenacity toward perfectionism in certain aspects of her life

High risk of having episodes of eating disorders and self medication

Stimming behaviors, such as hand flapping, rocking, or spinning can appear much milder. They can also be internalised/thoughts instead of external behaviours

May apologise and appease when they make a social error

Often more socially aware and driven

Often more socially aware and driven



## Communication

More aware of the need for social interaction

May have an exceptional vocabulary

Tends to mimic rather than providing natural responses

May converse in predictable, "scripted" ways

Seems to struggle with non-verbal aspects of communication, such as body language and tone of voice

May use odd inflection

Appears to have difficulty dealing with unexpected verbal responses

More able to follow social actions through observation

Usually has only one or two close friends at school

May have difficulty fitting in due to clothing and hairstyle choices

May make greater efforts to avoid drawing attention to themselves

Appears excessively shy or avoids interacting with others or making the first move socially

Can be quite controlling in play

Seems uncomfortable during conversation. Can struggle with eye contact

Often "mothered" by others in primary school but bullied in high school

May play appropriately with toys and engage in pretend play or may focus on organizing objects or toys

Often shows empathy and compassion but may be confused by non-verbal social signals

Usually holds it together well while out and explodes at home

## Social



www.thelittleblackduck.com.au  
©Copyright the little black duck 2018.  
All rights reserved. Advice is general in nature.  
Not to be reproduced without prior permission.



[J Autism Dev Disord.](#) 2019; 49(6): 2389–2402.

Published online 2019 Feb 21. doi: [10.1007/s10803-019-03906-4](https://doi.org/10.1007/s10803-019-03906-4)

PMCID: PMC6546643

PMID: [30790191](https://pubmed.ncbi.nlm.nih.gov/30790191/)

## A Qualitative Exploration of the Female Experience of Autism Spectrum Disorder (ASD)

[Victoria Milner](#), [Hollie McIntosh](#), [Emma Colvert](#), and [Francesca Happé](#)

**In November 2022, NAS launched 'Now I Know', a campaign highlighting the experiences of late-diagnosed autistic women and non-binary people from across the country.**

The campaign was photographed by autistic photographer Alex Heron, who works at Rankin Studio. You can watch short films or read longer interviews with the six people featured in the campaign. A series of additional interviews will be published at regular intervals sharing the stories of autistic women and non-binary people who responded to the #NowIKnow campaign on social media.



[Find out more](#)

Meet my speaker  
**Mica Coleman  
Jones**



**The  
Happy  
Lighthouse**

Training and Consultancy









**noise**

**lights**

**overload**

**instructions**

**friendships**

**lonely**

**literal**

**processing time**

















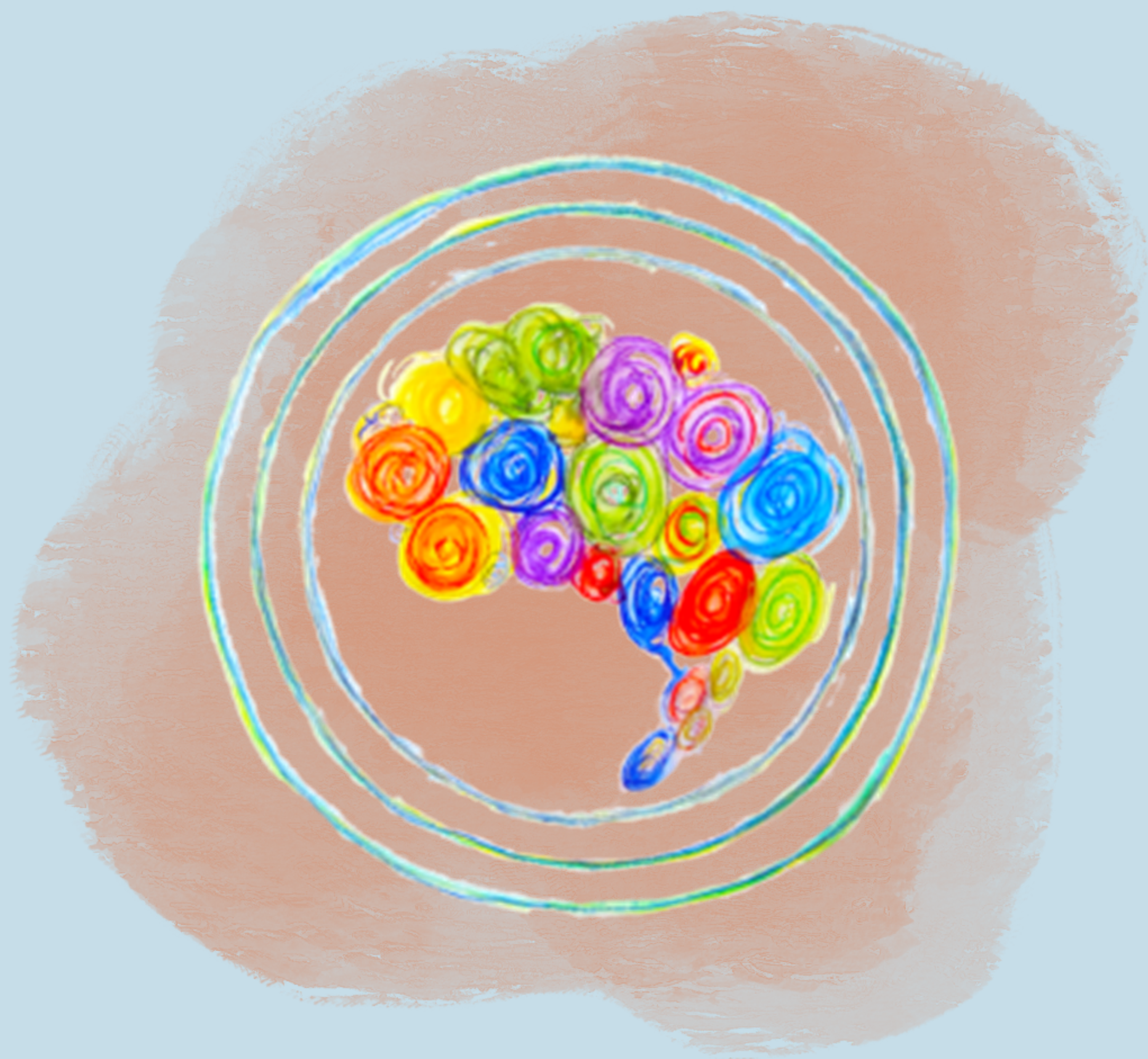







DIFFERENT  
-NOT- LESS





**We each have something to contribute.**



A hand is holding a small, square box with a colorful geometric pattern of triangles in shades of teal, pink, and brown. The box is open, and a white card is placed inside. The card has the text "YOU ARE CAPABLE OF ANYTHING" printed on it in a bold, black, sans-serif font. The background of the entire image is a bright blue sky with scattered, soft white and yellowish clouds, suggesting a sunrise or sunset.

**YOU ARE  
CAPABLE OF  
ANYTHING**





**The  
Happy  
Lighthouse**

Training and Consultancy



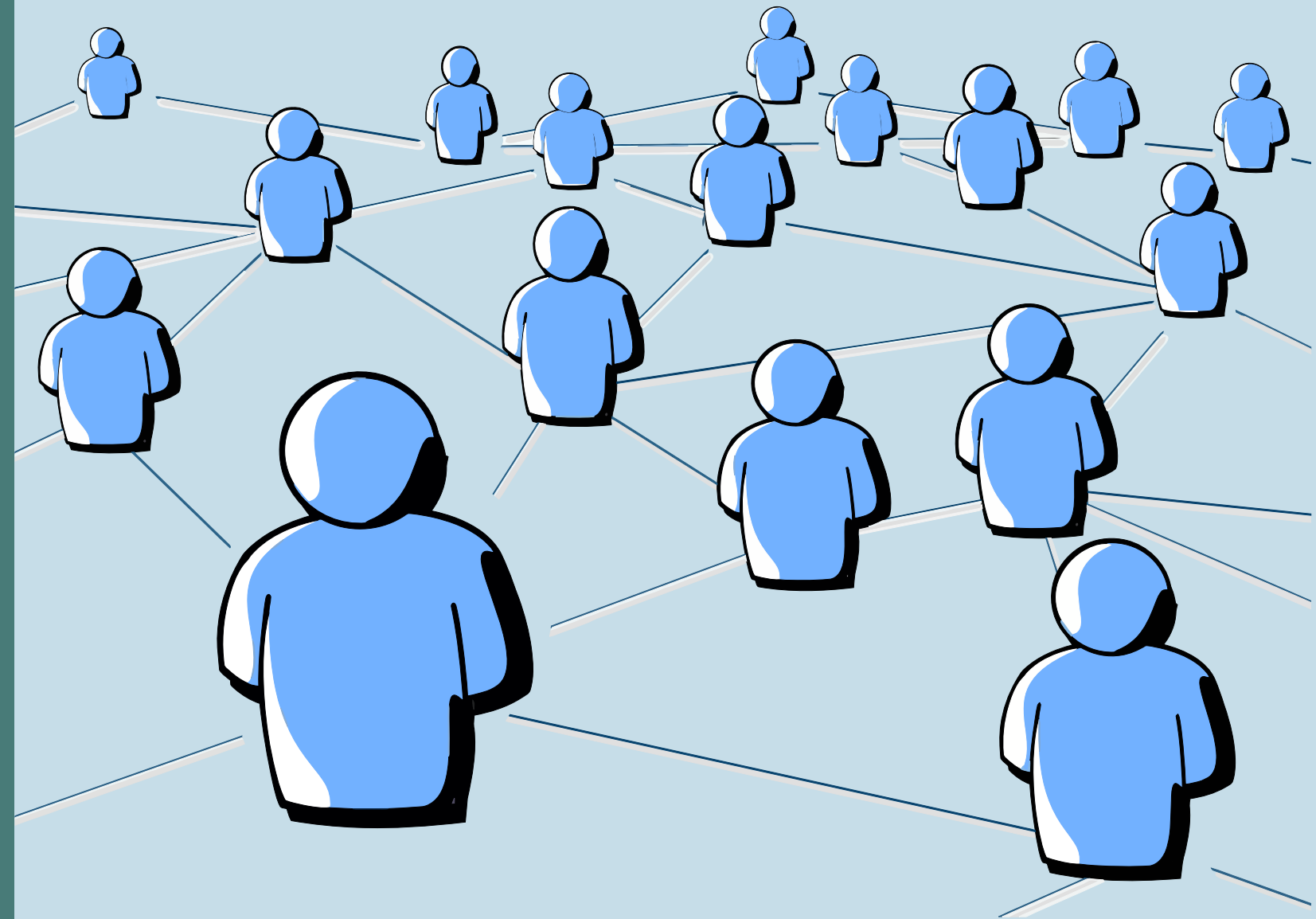
**@Mica\_\_Jayne**



**@the\_happy\_lighthouse**



**thehappyighthouse@outlook.com**





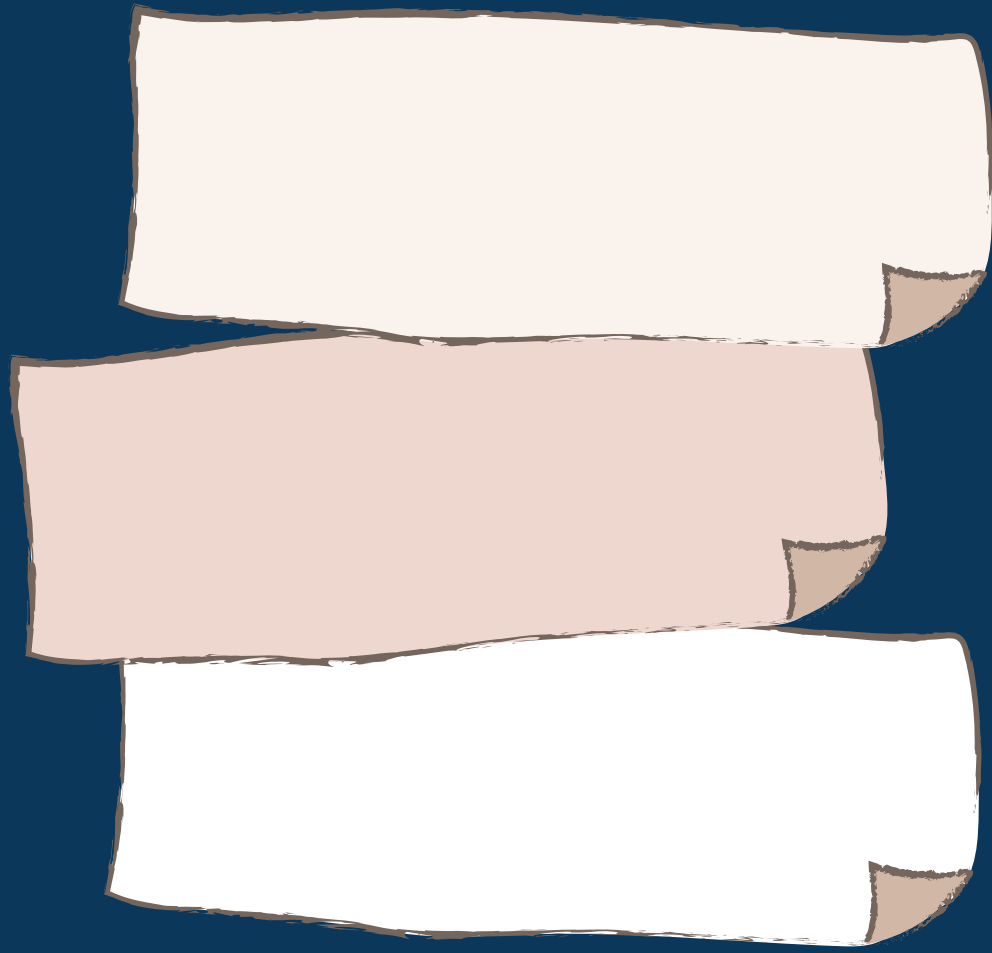


Ask me a question

Type something...







**Conclusions**  
**Key Ideas**





NEXT

Research café

# COMIC BOOKS AND LEARNING



Comic books have long been a popular form of entertainment, but they also have significant potential for educational purposes, particularly for autistic individuals.

Dr Muršić will share initial findings from our whole-school research project and explore the unique benefits of using comic books as a tool for learning. You will learn quick and practical strategies for incorporating comics and graphic novels into your daily routines.

Do not miss this opportunity to learn more about this fascinating and innovative approach to education!

 23 MAY 2023

 FROM 3 PM TO 4 PM (BST)

 ONLINE VIA ZOOM

Your host:



**DR SARA MURŠIĆ**

Head of Autism Research and  
Development

FREE REGISTRATION