

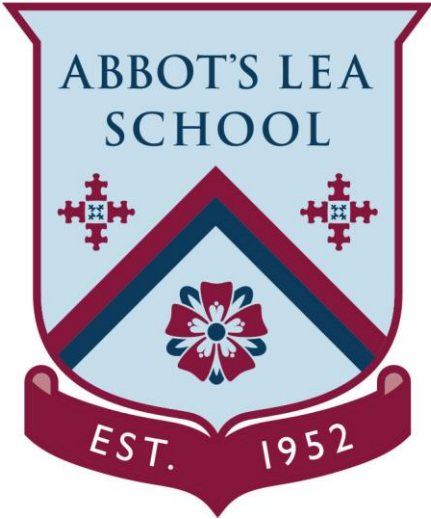


Our School 2023-24

70+ Years of Service



Est: 1952



Our Vision and Mission Statement

To be the international Centre of Excellence in Autism education,
research and professional development

Our Motto

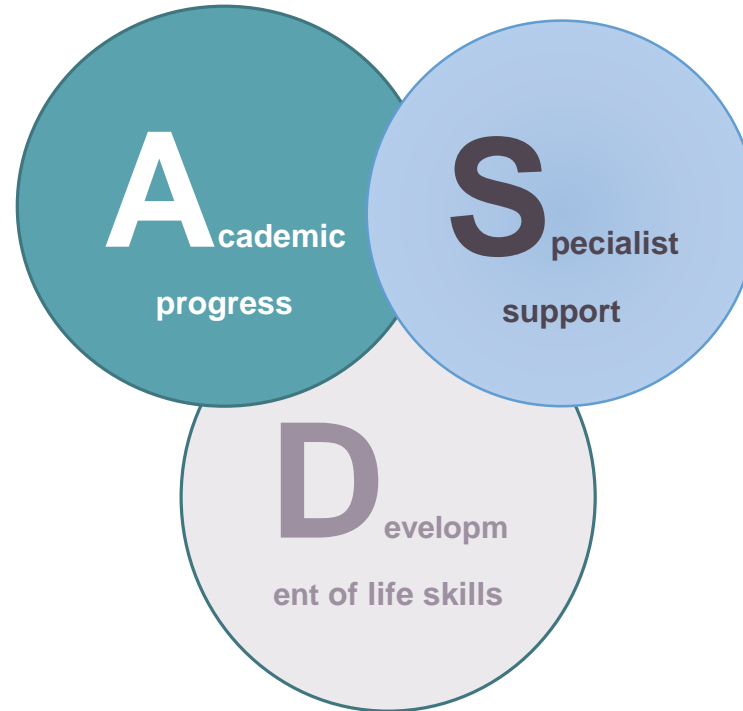
We want Abbot's Lea to be the best specialist school in the world!

Our Philosophy of Education: The ASD Model ©

In our work with the students, we will focus equally on:

1. Academic progress
2. Specialist therapeutic support
3. Development of life skills

What The ASD Model © looks like?



Our Code of Conduct: The Golden Rules ©:

1. Be here. Every day...
2. Work hard and be nice
3. Never give up on yourself and others
4. Stay positive and be happy!

Strategic Leadership Structure (SLT)

Liverpool City Council

Mrs Ania Hildrey
Headteacher

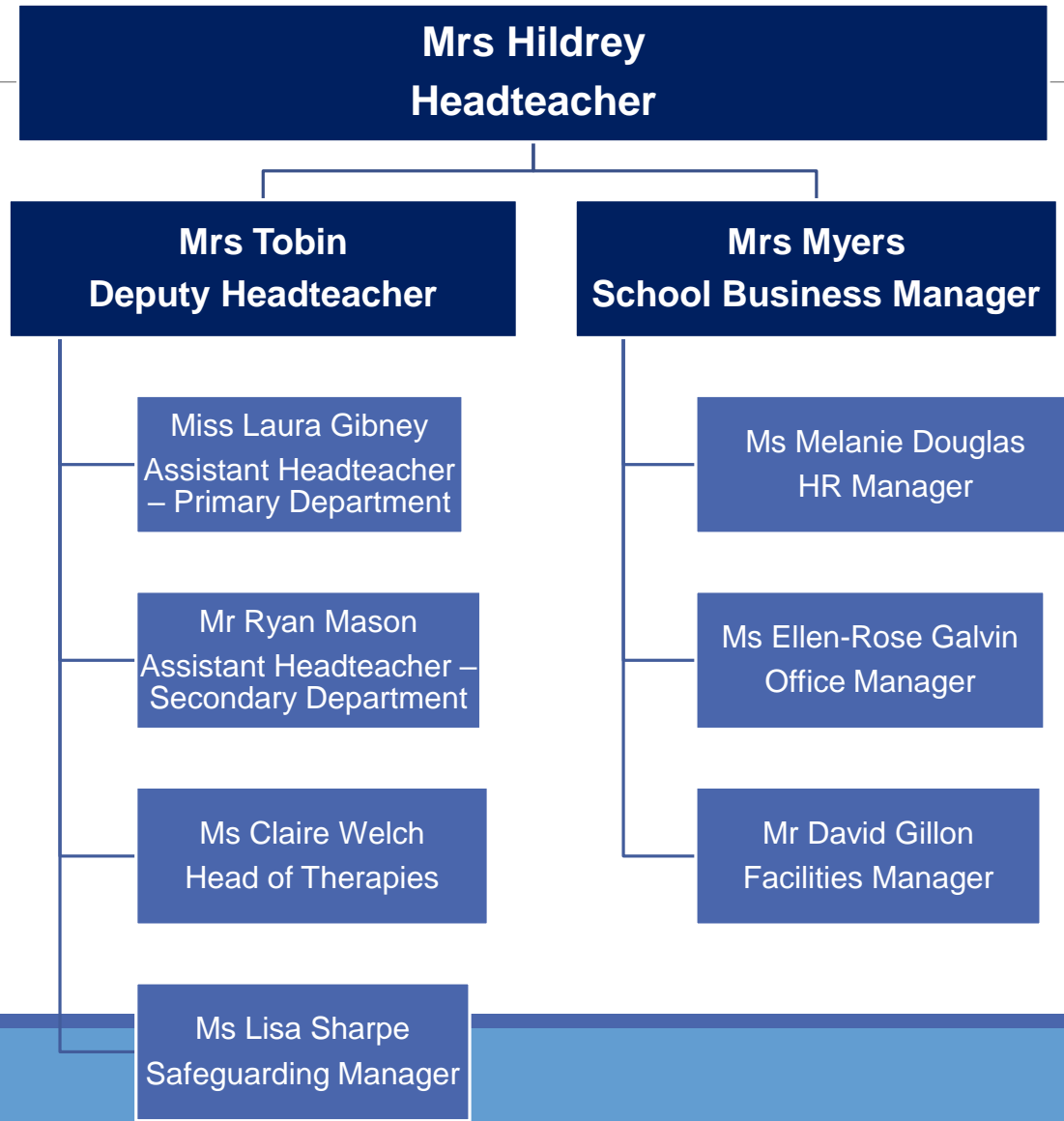
Governing Body

Miss Lexie McComasky
Headteacher's PA and
Clerk to GB

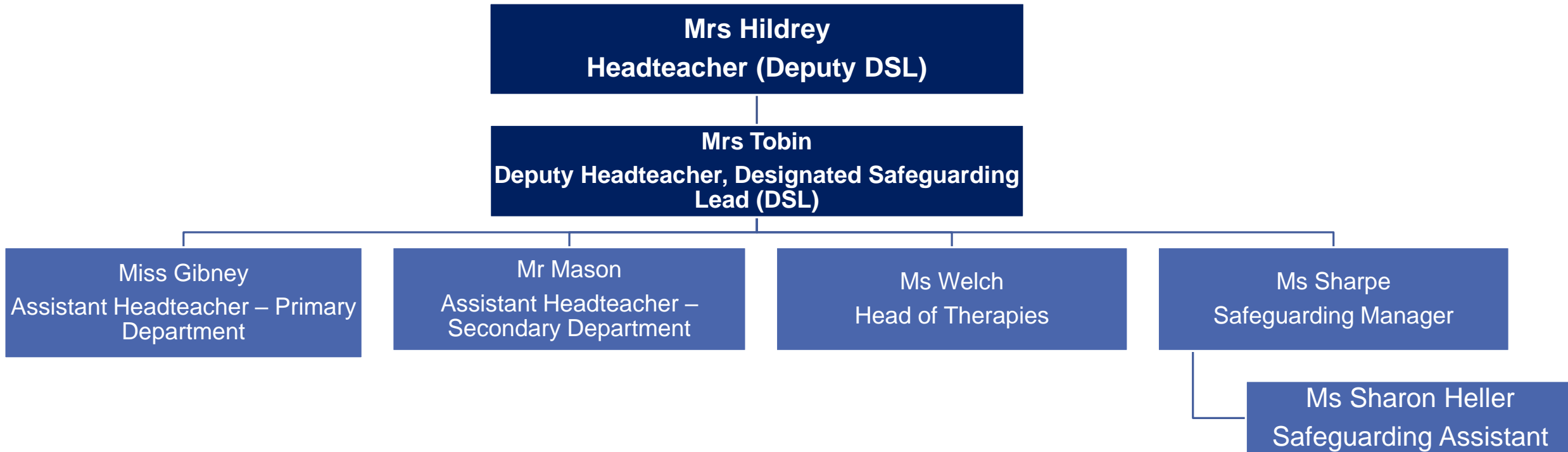
Mrs Emily Tobin
Deputy Headteacher

Mrs Keri Myers
School Business Manager

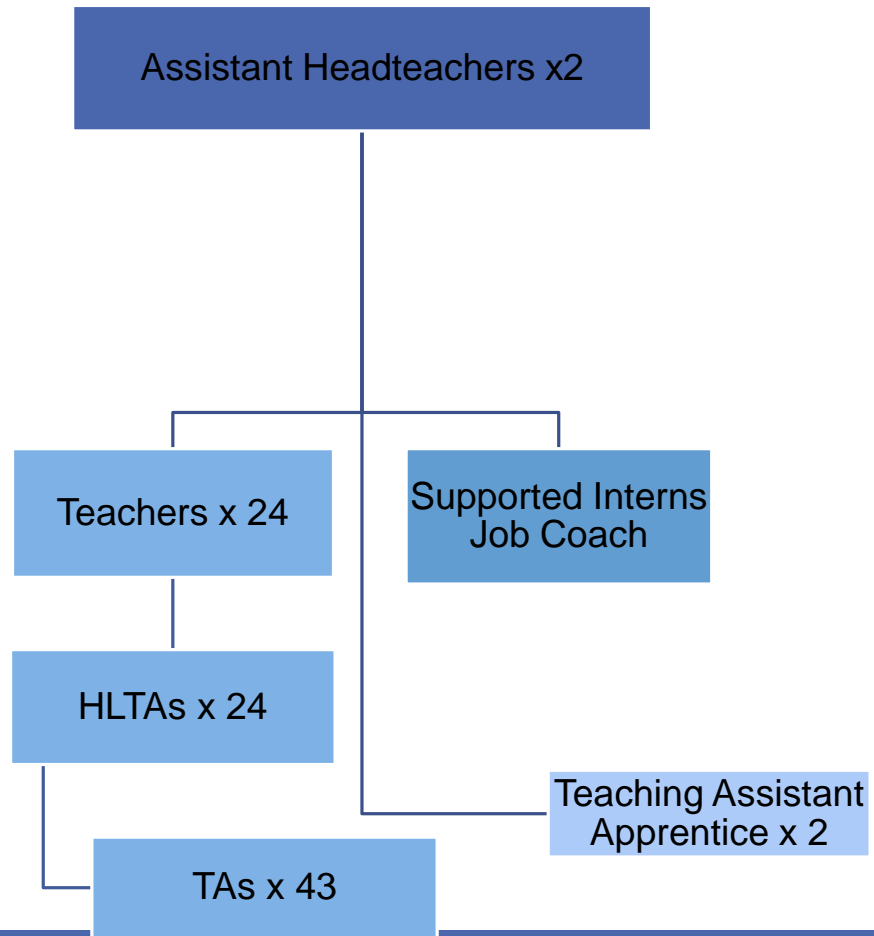
Operational Leadership Structure (OLT)



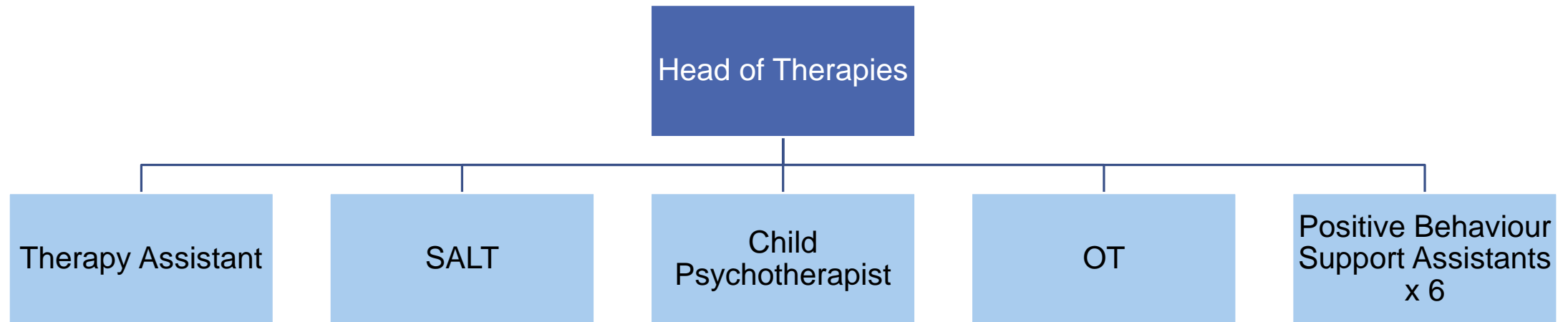
Safeguarding Team (ST)



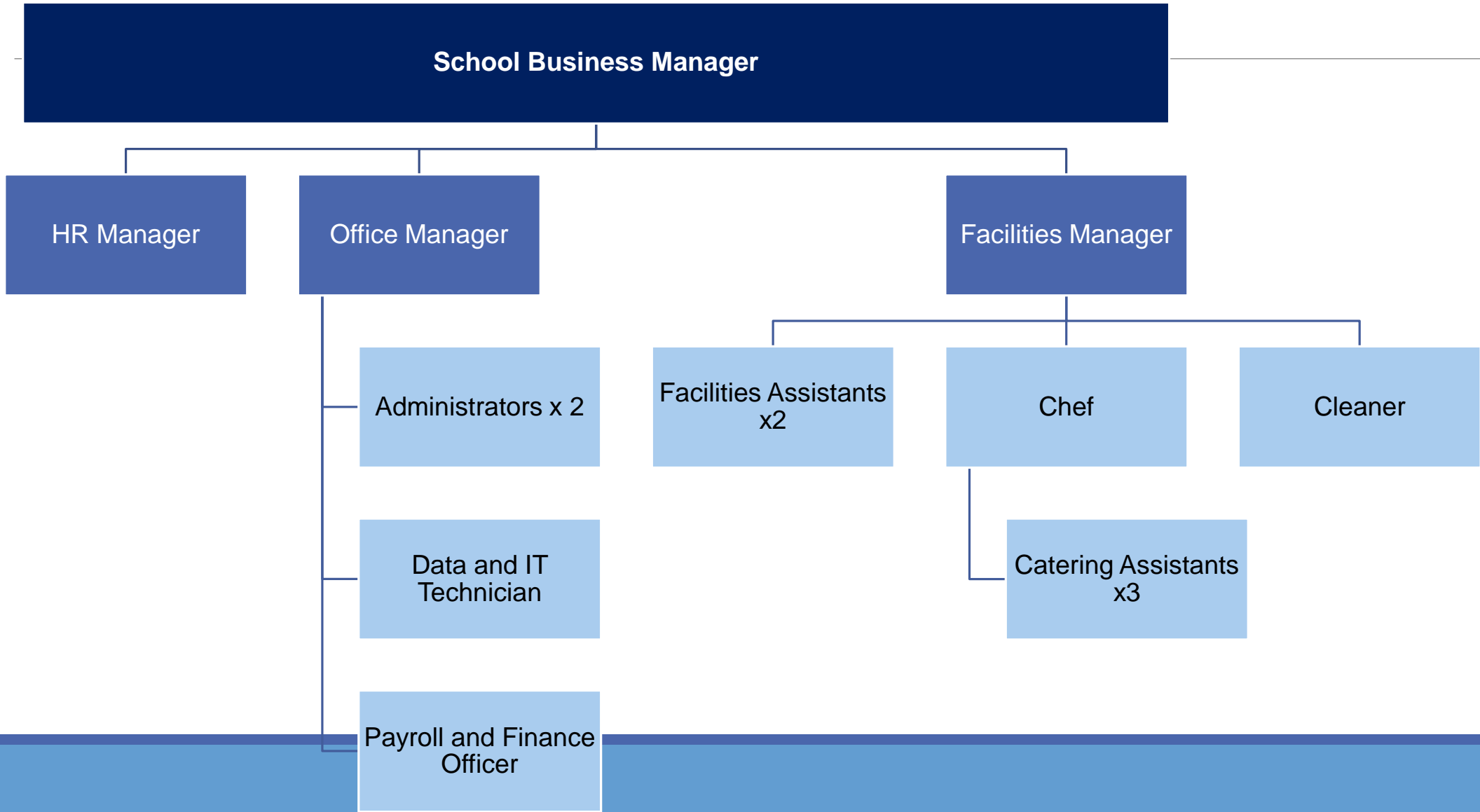
Teaching and Learning Team (T&L)



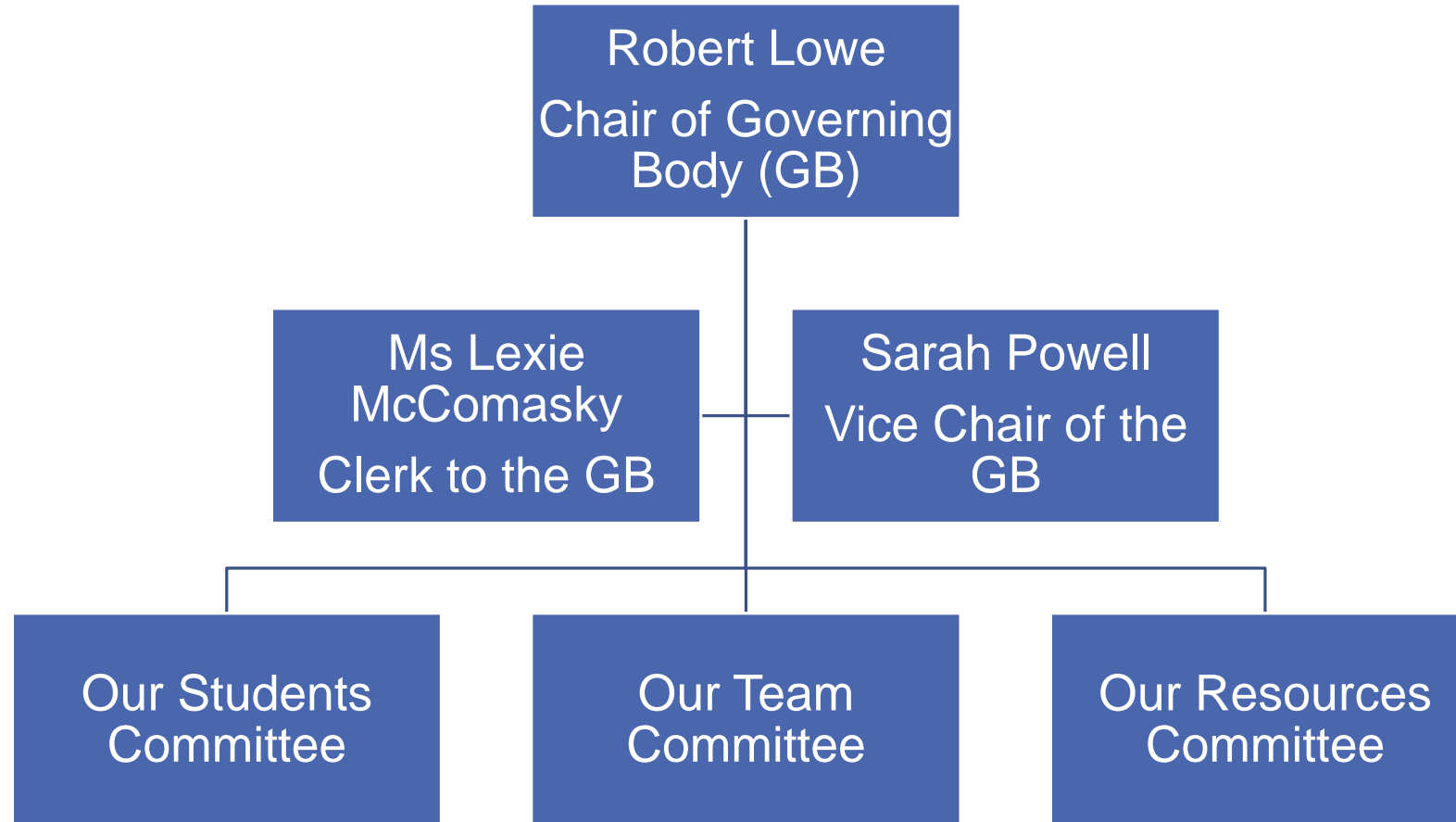
Multidisciplinary Therapy Team (MDT)



School Business Support Team (SBS)



Overview and Scrutiny



School Development Plan



Our Students



Our Team



Our Resources



School Development Plan

<http://www.abbotsleaschool.co.uk/wp-content/uploads/2022/09/SDP-2022-24.pdf>

Our school priority



Ofsted 2021

November 2021:

What does the school need to do to improve?

- There is ongoing tension between a minority of staff and leaders. While it does not directly affect the quality of education that pupils are receiving, it has created a divide in the staff. This is hindering ongoing school improvement. **Leaders and governors should continue to engage meaningfully with these staff to resolve the ongoing tensions.***
- Leaders do not ensure that some pupils in key stage 4 and students in the sixth form work towards a full suite of recognised qualifications. On occasions, this hinders some pupils and students from achieving as highly as they could. **Leaders should continue to review the qualifications that pupils and students can access to enable them to fulfil their potential and career aspirations.***

Admissions

Our school's official DfE approved admission number is: 207

Adding permissible 10% (as per DfE guidance) makes it: 227

Current roll (in light of LCC SEND pressures for admissions): 272

Current oversubscription level: 45 students (~20% over maximum permissible capacity)

Term dates and Key Diary Dates

Term dates: <http://www.abbotsleaschool.co.uk/wp-content/uploads/2023/07/Term-dates-2023-24.pdf>

Key Diary Dates – central oversight of the events on Outlook

+ Twilights (5pm finish)

Contact details

Mrs Ania Hildrey, Headteacher of Abbot's Lea School

headteacher@abbotsleaschool.co.uk

Twitter and Facebook:

@AbbotsLeaSchool